

## USB Data Cable Installation Instruction

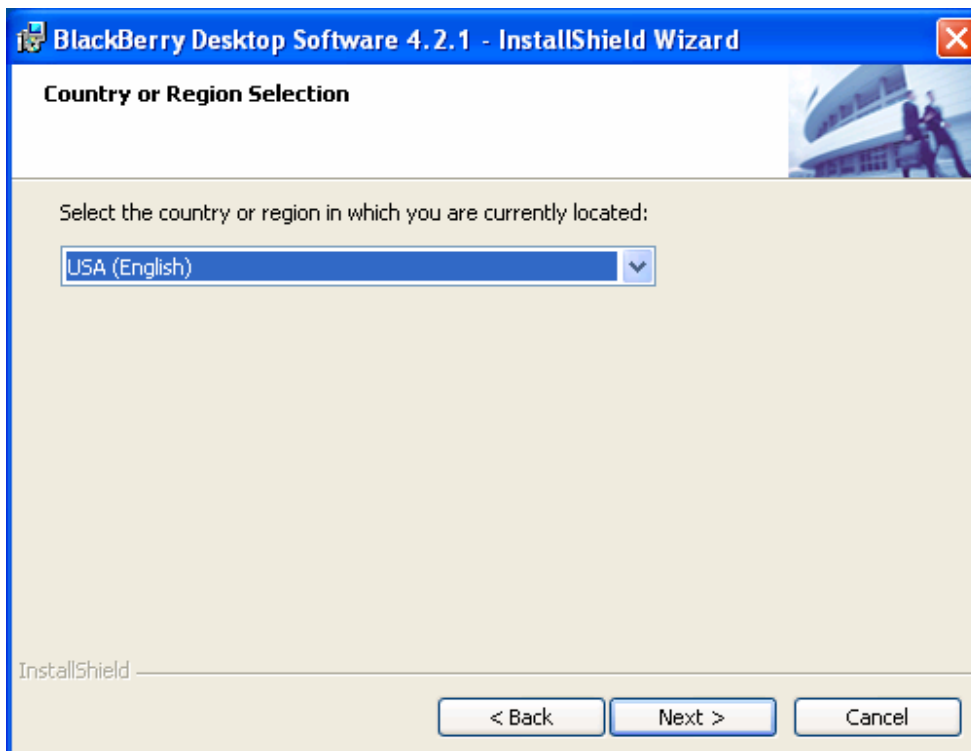
1. Power on your computer and make sure that the USB port is enabled and working properly.
2. Please make sure that your network is connecting to the Internet properly.
3. Please link the web: <http://www.blackberry.com/support/downloads/index.shtml> ,Then download and install the Desktop Software 4.2.1 follow the instructions.
4. Click the icon "Start.exe".Windows will run the Installshield Wizard.
5. Select the country or region in which you are currently located for the installation and click the "Next".
6. Select "I accept the terms in the license agreement" option and click the "Next" to continue.
7. Click "Next" to install one folder, or click Change to install to a different folder.
8. Please select a setup type and click "Next" to continue.
9. Please select the integration option for this installation of the desktop software and click "Next" to continue.
10. Please select blackberry enterprise server and click "Next".
11. Please select the method of message redirection and click "Next".
12. Click "Install" to begin the installation.
13. Please wait a few minutes until Windows has finished installing the driver and click "finish" to exit the wizard.
14. Open the system from Control Panel to check the BlackBerry Device assigned by windows. Then select a proper COM for the software that you are using.
15. Insert the USB Data Cable into the USB port and connect the phone to the data cable , after the BlackBerry Desktop Software 4.2.1 has been installed, Windows should display the following: Found New Hardware.
16. If the phone and PC are connected successfully, Windows will display: Your new hardware is installed and ready to use. Then The USB Data cable is now ready for use.

**Example: BlackBerry - 8800**

**Step 1. Double click the icon “Start.exe”, Windows will run the InstallShield Wizard.**



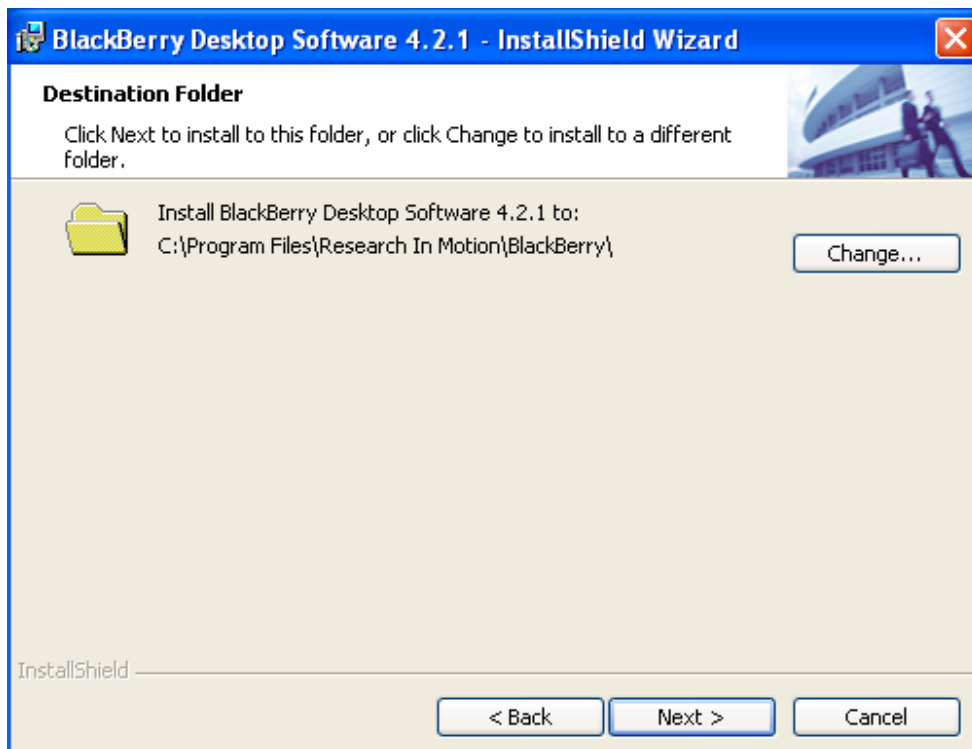
**Step 2. Select the country or region in which you are currently located for the installation and click the “Next”.**



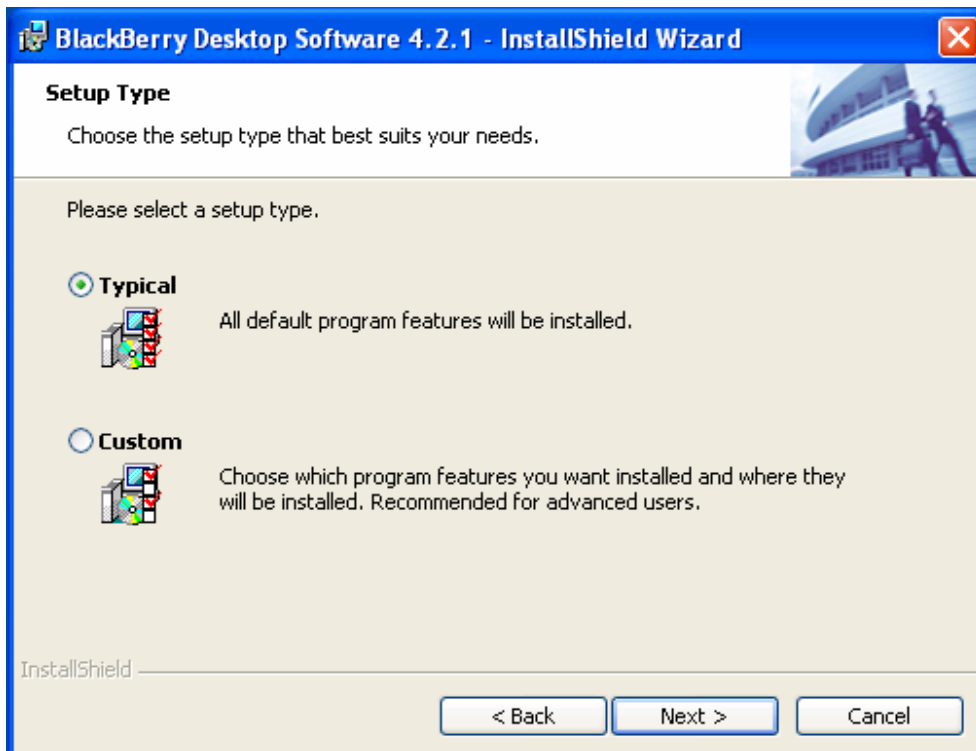
**Step 3. Select “I accept the terms in the license agreement” option and click the “Next” to continue.**



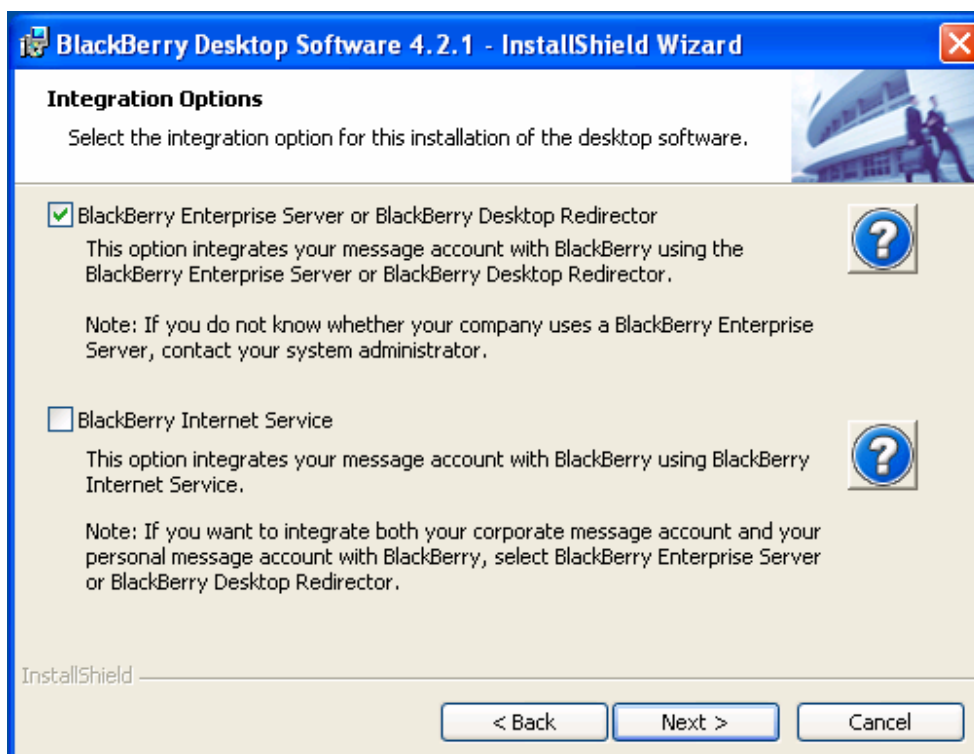
**Step 4. Click “Next” to install one folder, or click Change to install to a different folder.**



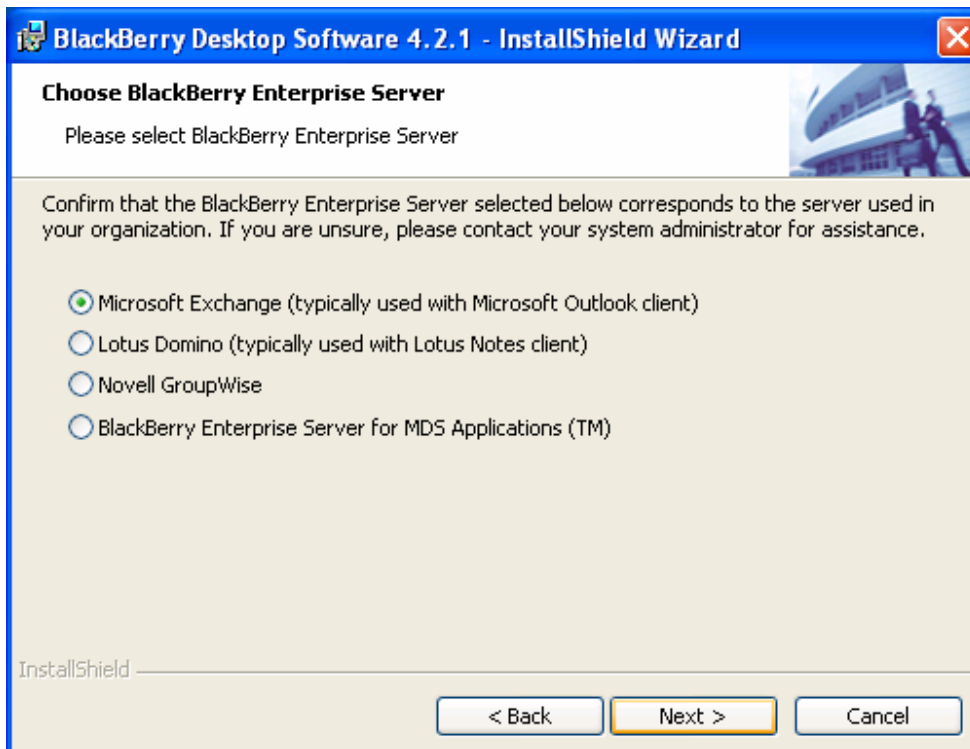
**Step 5. Please select a setup type and click “Next” to continue.**



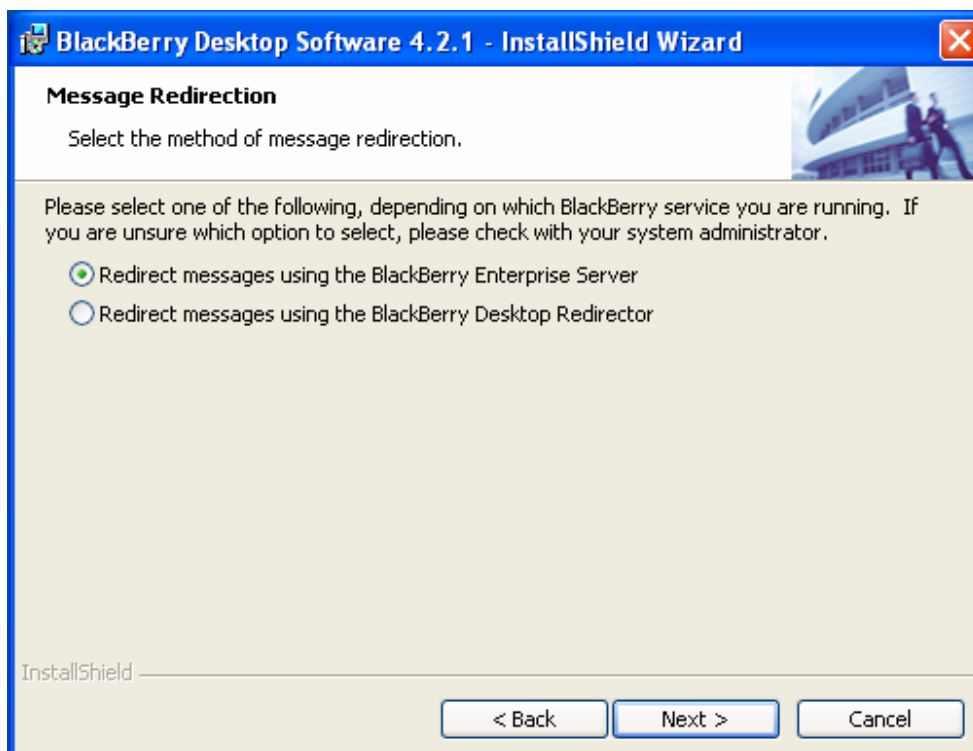
**Step 6. Please select the integration option for this installation of the desktop software and click “Next” to continue.**



**Step 7. Please select blackberry enterprise server and click “Next”.**



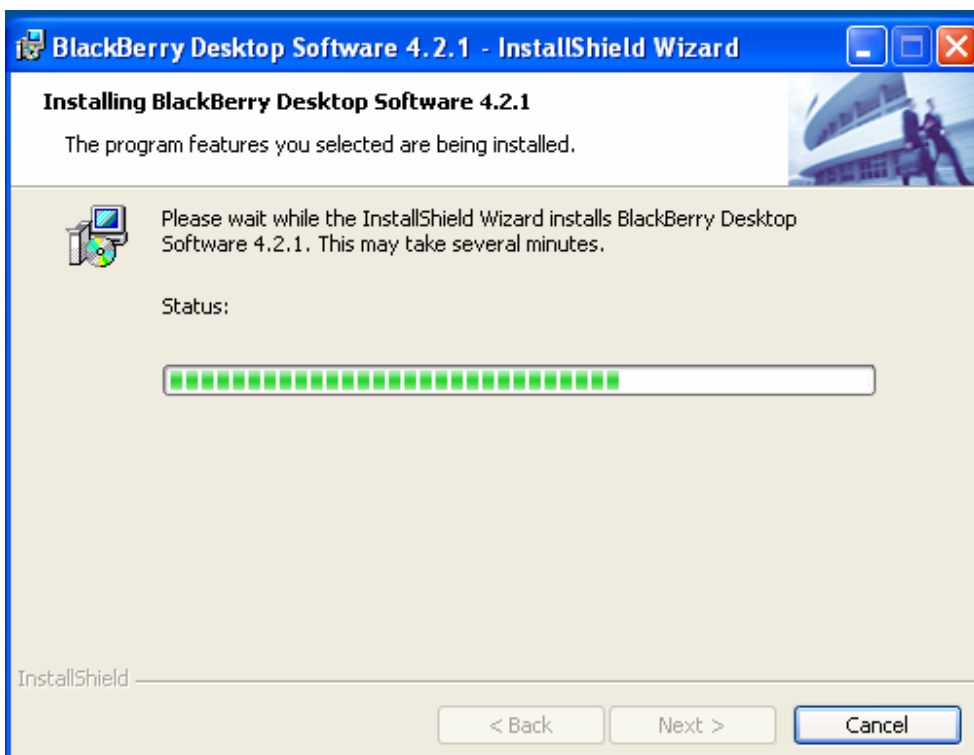
**Step 8. Please select the method of message redirection and click “Next”.**

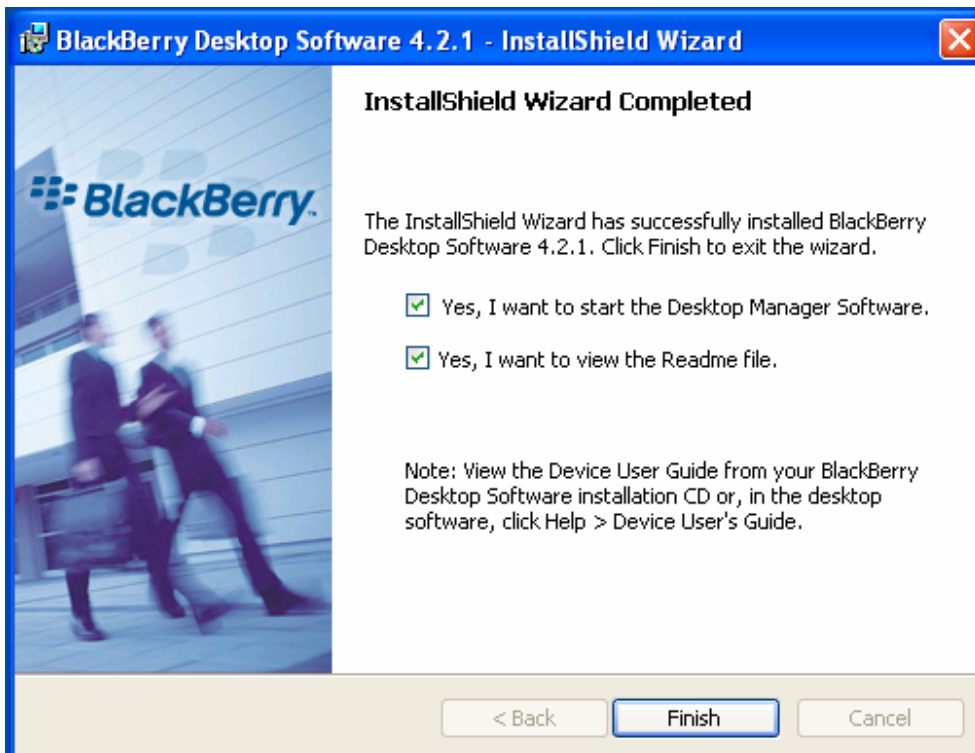


**Step 9. Click “Install” to begin the installation.**

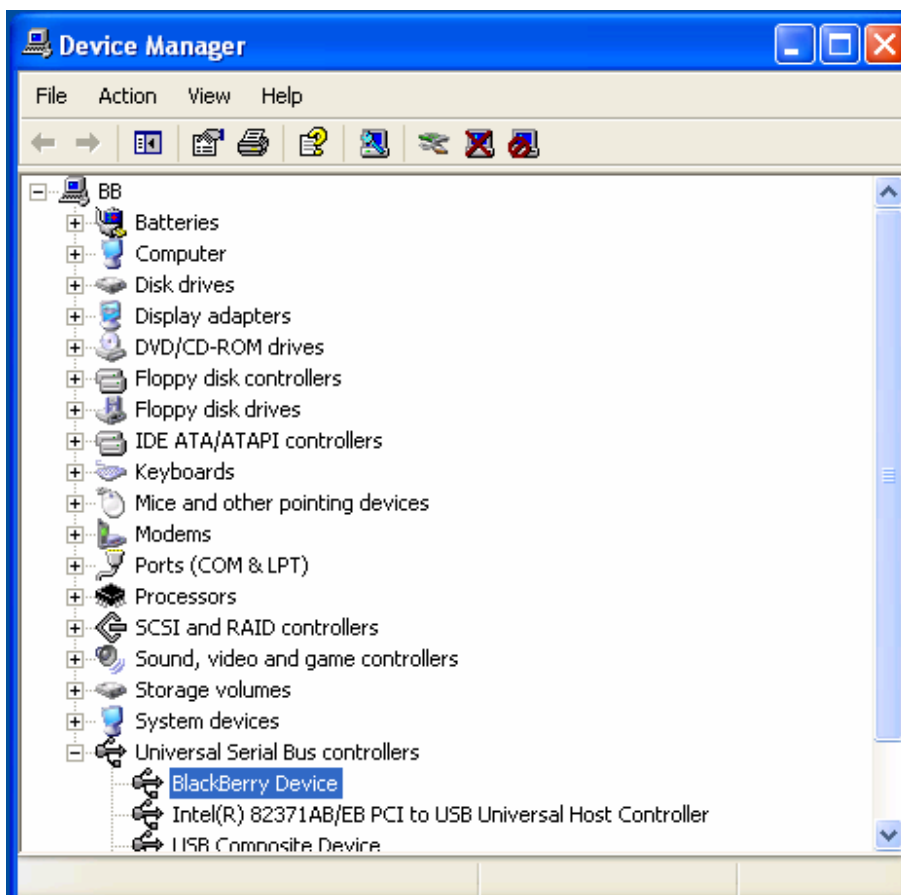


**Step 10. Please wait a few minutes until Windows has finished installing the driver and click “finish” to exit the wizard.**





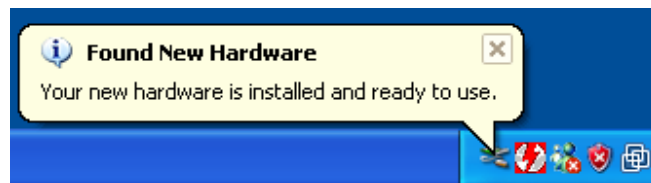
**Step 11. Open the system from Control Panel to check the BlackBerry Device assigned by windows. Then select a proper COM for the software that you are using.**



**Step 12. Insert the USB Data Cable into the USB port and connect the phone to the data cable , after the BlackBerry Desktop Software V4.2 has been installed, Windows should display the following: Found New Hardware.**



**Step 13. If the phone and PC are connected successfully, Windows will display: Your new hardware is installed and ready to use.**



**Then The USB Data cable is now ready for use.**