

USB Data Cable Installation Instruction

1. Power on your computer and make sure that the USB port is enabled and working properly.
2. Please make sure that your network is connecting to the Internet properly.
3. Please link the web: <http://www.palm.com/us/support/downloads/windesk414e.html>, Then download and install the Microsoft Active Sync 4.1 follow the instructions.
4. Double click the icon "setup.exe".Windows will run the Installshield Wizard.
5. Click the "Next" to continue.
6. Click the "Next" to Synchronize. If you want to install Outlook, please click "Next",otherwise, click "Skip" to continue.
7. Click " Next " to install Microsoft Active Sync 4.1 on your computer.
8. Select "I accept the terms in the license agreement" option and click the "Next" to continue.
9. Please wait a few minutes until Windows has finished installing the driver.
10. If the installation is installed successfully, ActiveSync should automatically detect your device.
11. Insert the USB Data Cable into the USB port and connect the phone to the data cable , Windows should locate your mobile device automatically.
12. Please wait until Windows will display: Your new hardware is installed and ready to use.
13. To setup a Sync relationship between the computer and the smartphone,click "Next".
14. Select an information type and click "Settings" to change Sync options for that type.then click "Next" to continue.
15. To close the wizard and begin Sync your smartphone,click "Finish" to exit the wizard.
16. Open the system from Control Panel to check the Windows mobile-based Device assigned by windows that you are using.

Example: Treo-700W

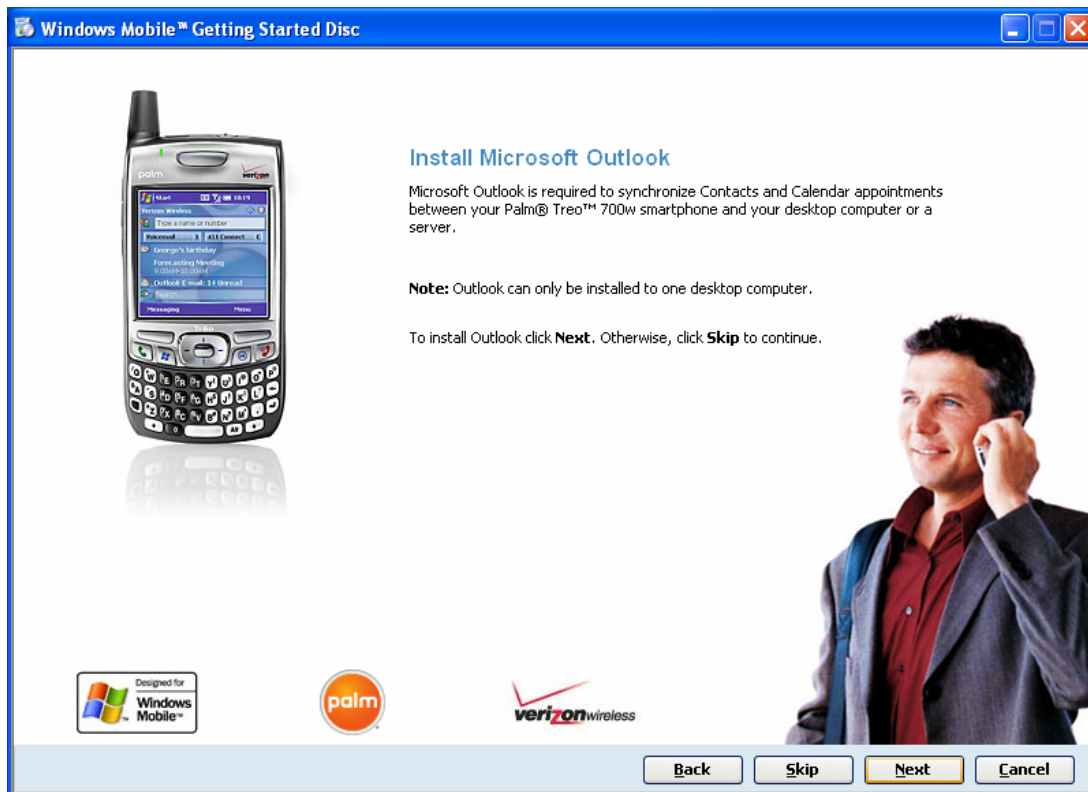
Step 1. Double click the icon “setup.exe”, Windows will run the Installshield Wizard.



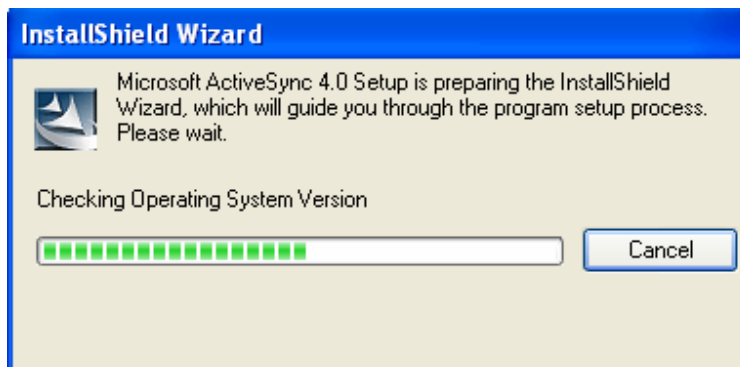
Step 2. Click the “Next” to continue.

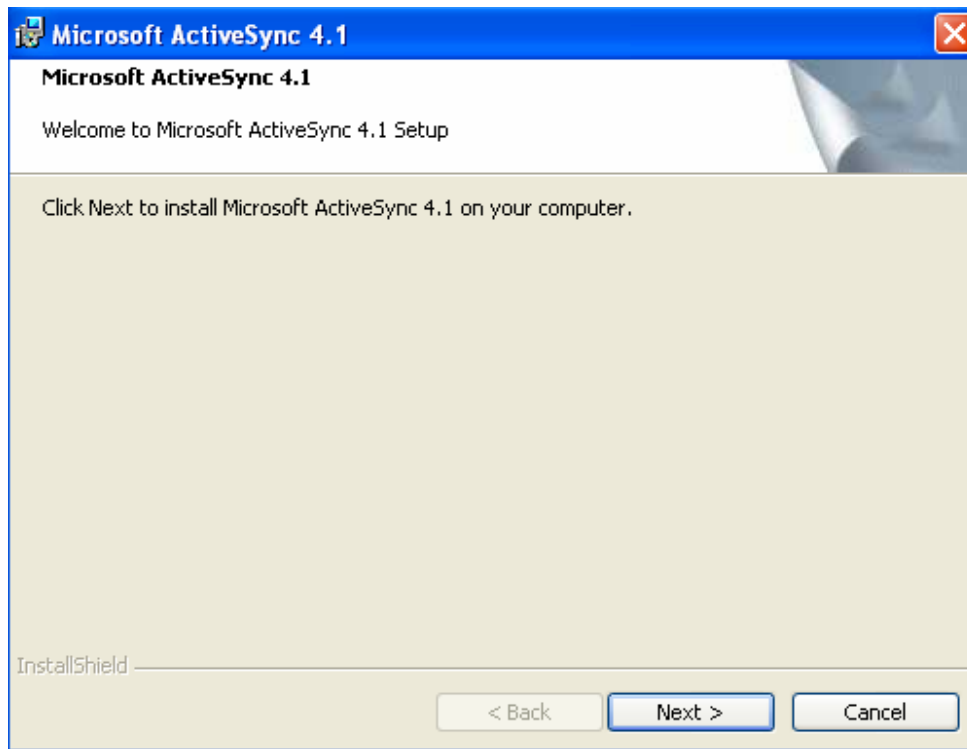


Step 3. Click the “Next” to Synchronize. If you want to install Outlook, please click “Next” ,otherwise,click “Skip” to continue.

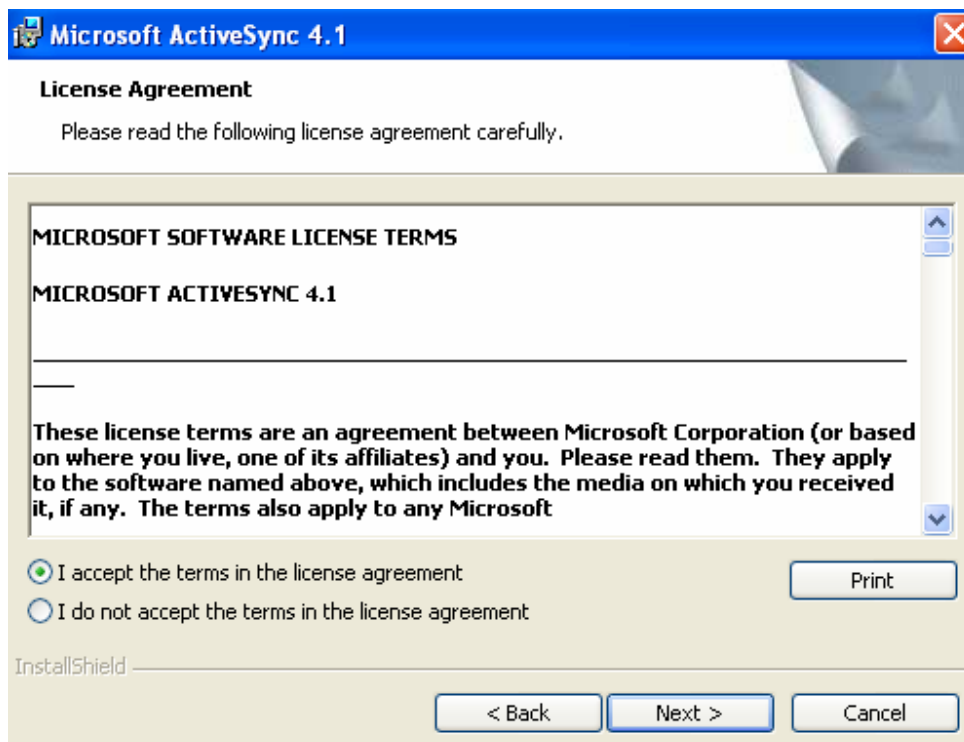


Step 4. Click “ Next ” to install Microsoft Active Sync 4.1 on your computer.

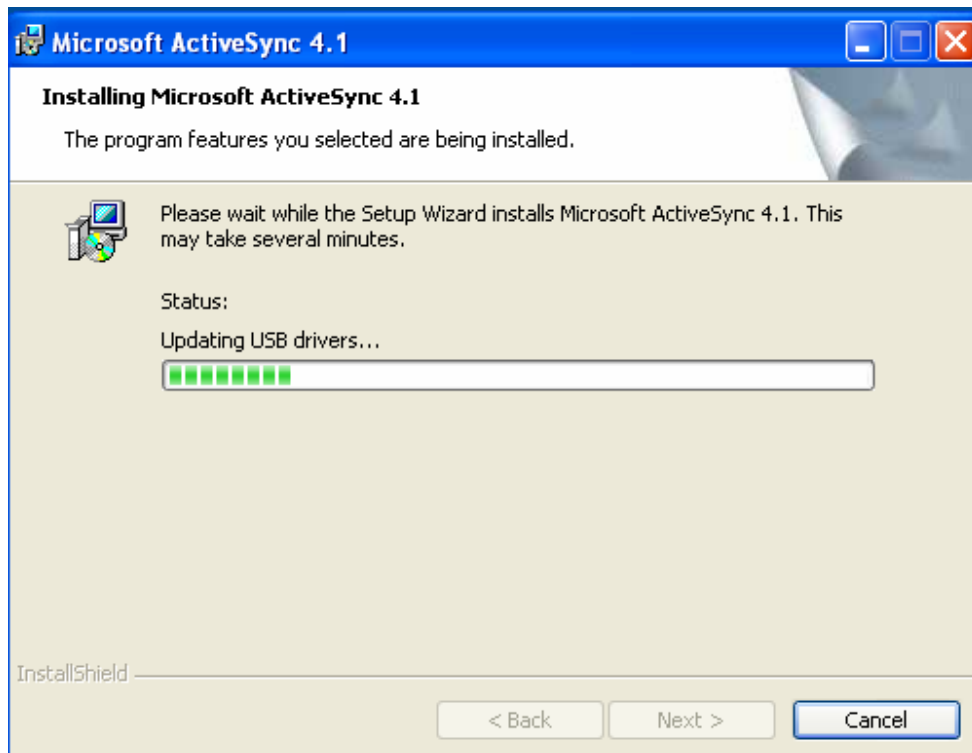




Step 5. Select “I accept the terms in the license agreement” option and click the “Next” to continue.



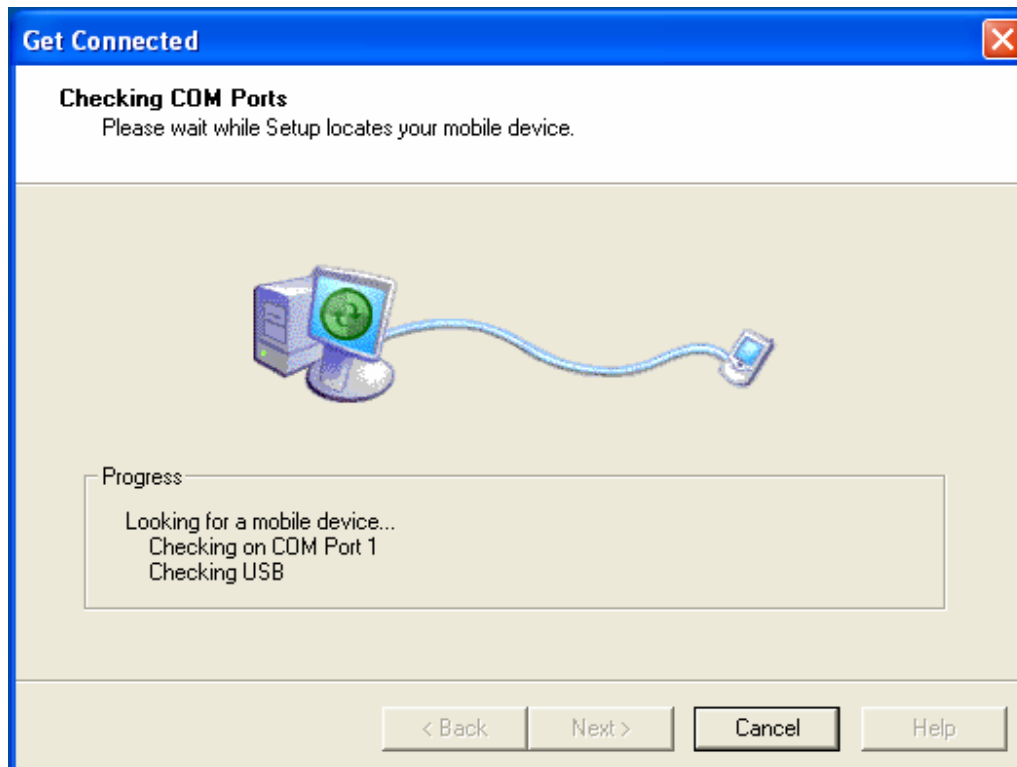
Step 6. Please wait a few minutes until Windows has finished installing the driver.



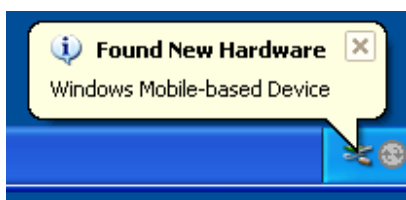
Step 7. If the installation is installed successfully, ActiveSync should automatically detect your device.



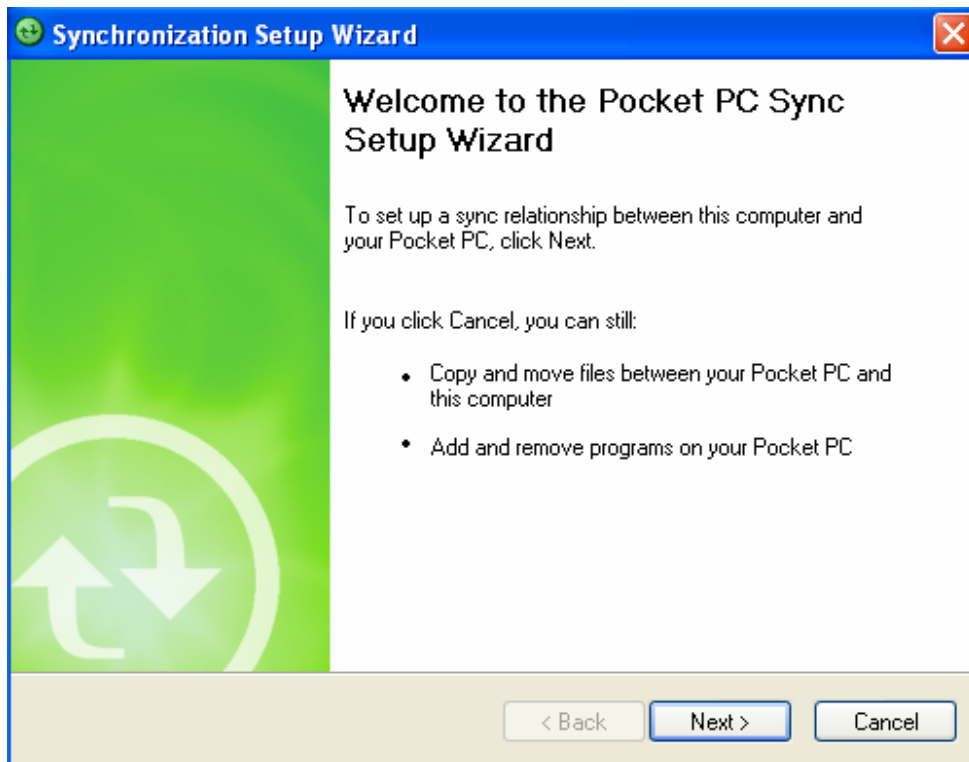
Step8. Insert the USB Data Cable into the USB port and connect the phone to the data cable , Windows should locate your mobile device automatically.



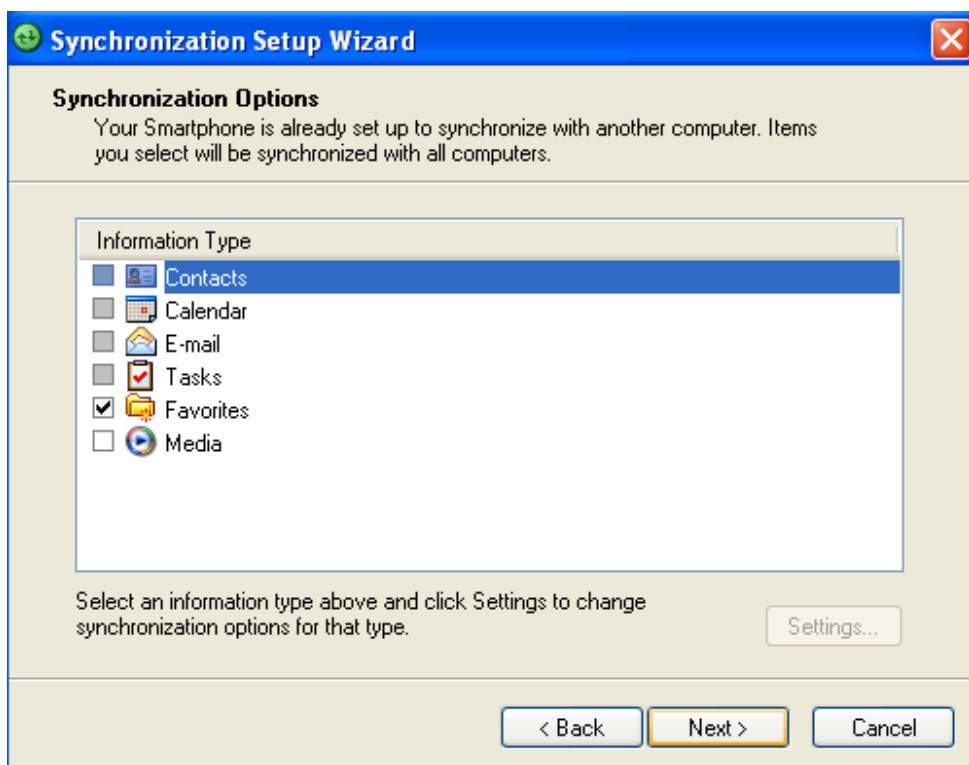
Step9. Please wait until Windows will display: Your new hardware is installed and ready to use.



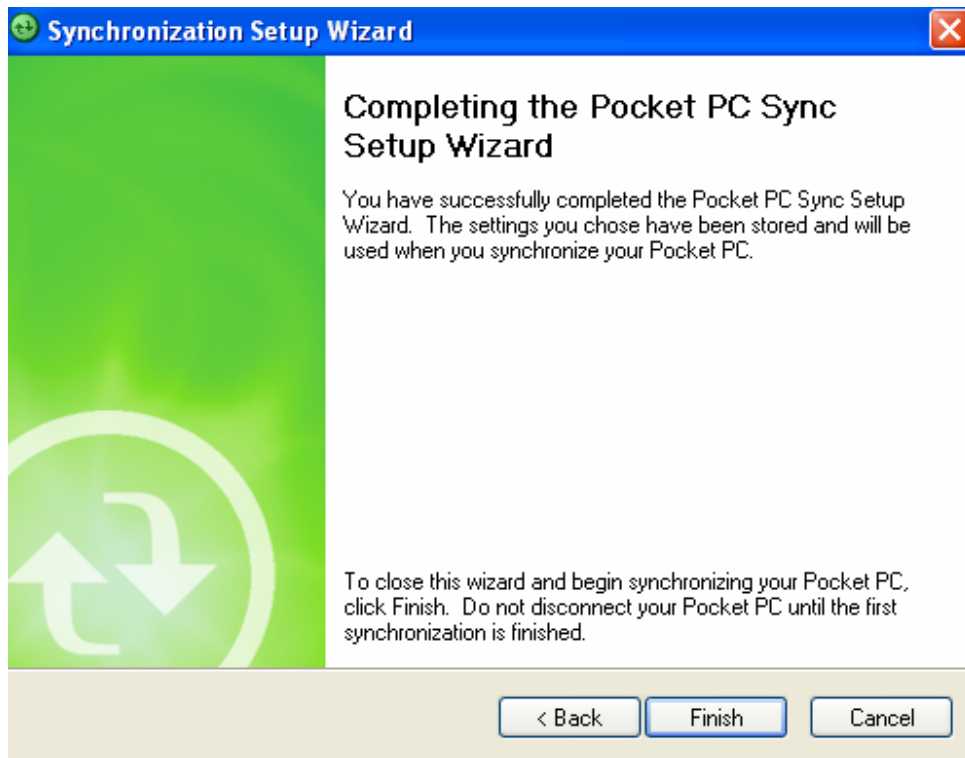
Step10. To setup a Sync relationship between the computer and the smartphone,click "Next".



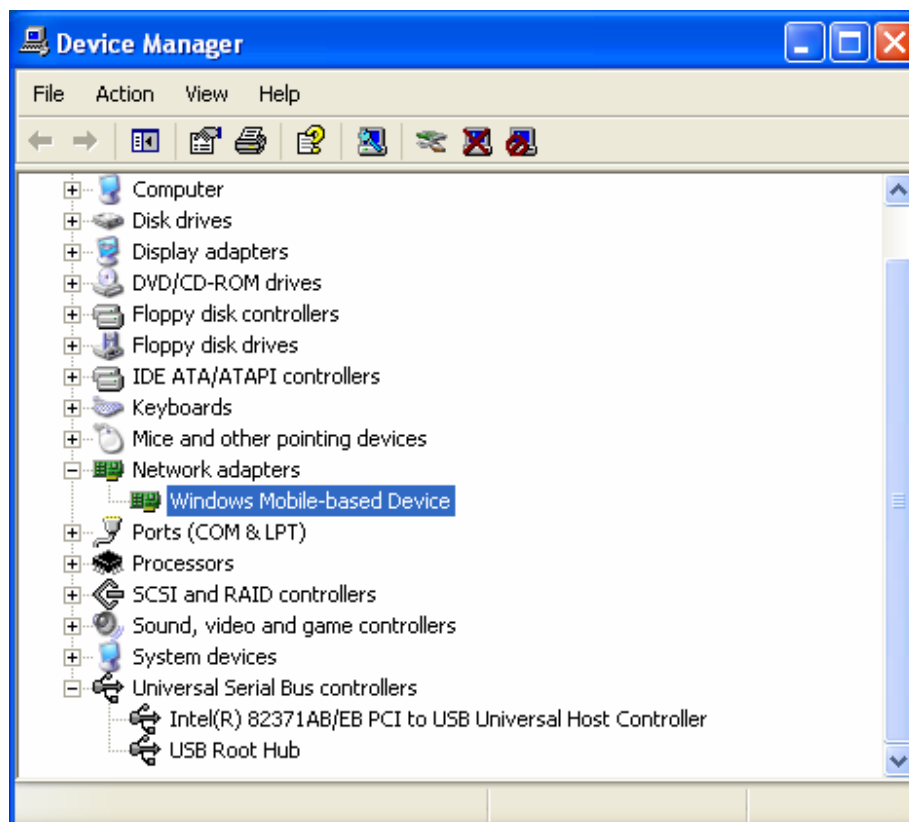
Step11. Select an information type and click “Settings” to change Sync options for that type.then click ”Next” to continue.



Step12. To close the wizard and begin Sync your smartphone ,click “Finish” to exit the wizard.



Step13. Open the system from Control Panel to check a Windows Mobile-based Device assigned by windows.



Then The USB Data cable is now ready for use.