


USB Data Cable Installation Instruction

1. Power on your computer and make sure that the USB port is enabled and working properly.
2. Please make sure that your network is connecting to the Internet properly.
3. Please link the web: <http://www.palm.com/us/support/downloads>, Then download and install the PalmOne desktop follow the instructions.
4. When the download is complete, double-click the PalmOne desktop.zip file you downloaded. If it doesn't automatically unpack, you may need to decompress it manually with a utility such as WinZip.
5. One file will be decompressed: setup.exe. Double-click this file to launch the installer, and follow the onscreen instructions to install Palm Desktop and the other components listed above.
6. Click "Next" to continue. PalmOne setup is preparing the installshield Wizard.
7. Click "Next" to install software from PalmOne on your computer.
8. Select "I accept these terms" option and click the "Next" to continue.
9. You select the checkbox below and click "Next" to download the latest settings for your phone from the Internet.
10. Please wait a few minutes until Windows has finished installing the software. then click "Finish" to continue.
11. Click "Next" to go to step2 to Synchronize your device and computer.
12. Enter your new username and click "Next" to continue.
13. Please register your device and click "Next" to continue.
14. Please enter or confirm your E-mail address to receive your special benefits.and click "Next" to continue.
15. Click "Next" to go to step4 to install additional software. then you've completed the Palm Desktop installation.
16. Insert the USB Data Cable into the USB port and connect the phone to the data cable.
17. Select the "HotSync" icon on the phone screen menu.
18. On the next display,select : "Cradle /Cable" ,then select link icon:  , Windows will

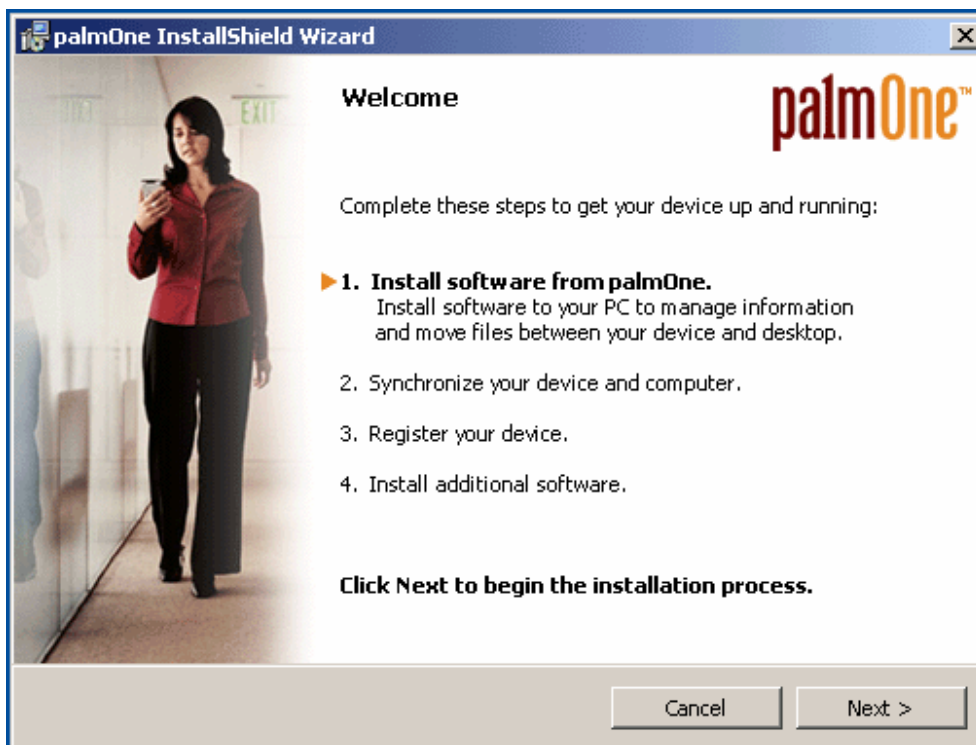
display : "Found New Hardware". Whereafter The phone screen display:connecting with the desktop using Cradle/Cable,at the same time, Windows will synchronize the phone and computer.

19. Please wait until Windows will display: Your new hardware is installed and ready to use.

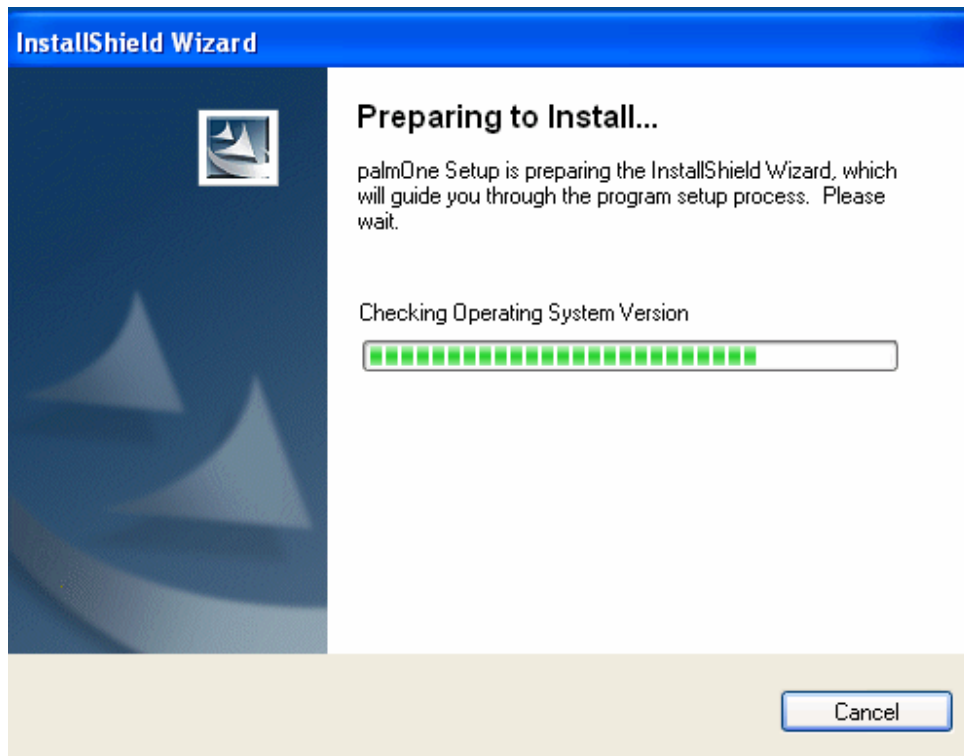
20. Open the system from Control Panel to check the Palm OS Handheld Devices assigned by windows that you are using.

Example: Treo-650

Step 1. Double click the icon "setup.exe",Windows will run the InstallShield Wizard.



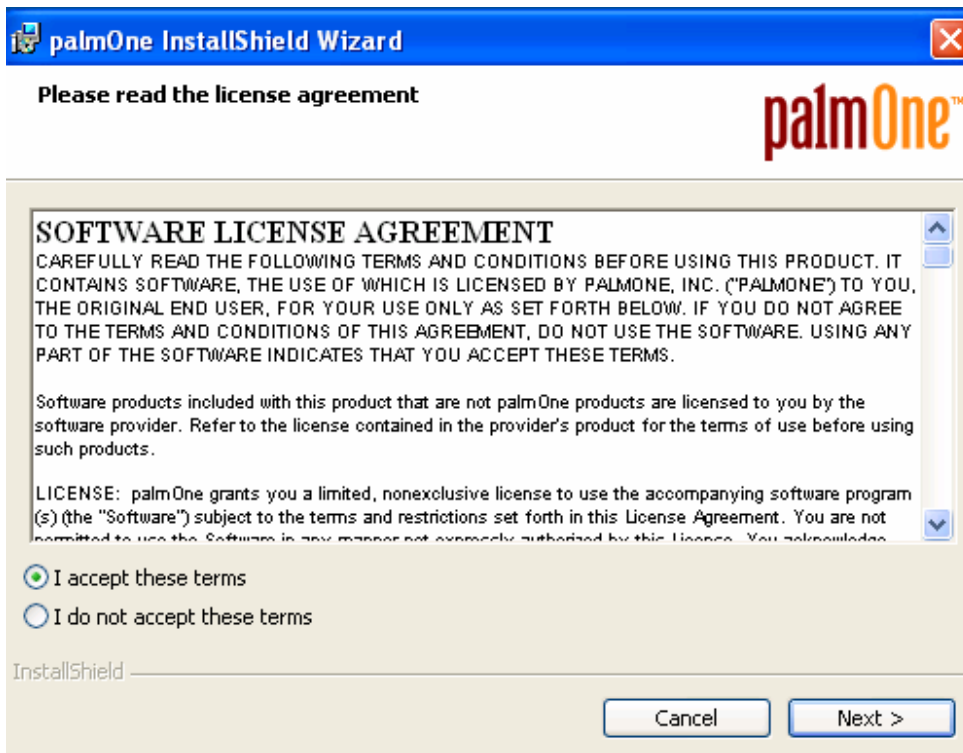
Step 2. Click the "Next" to continue.



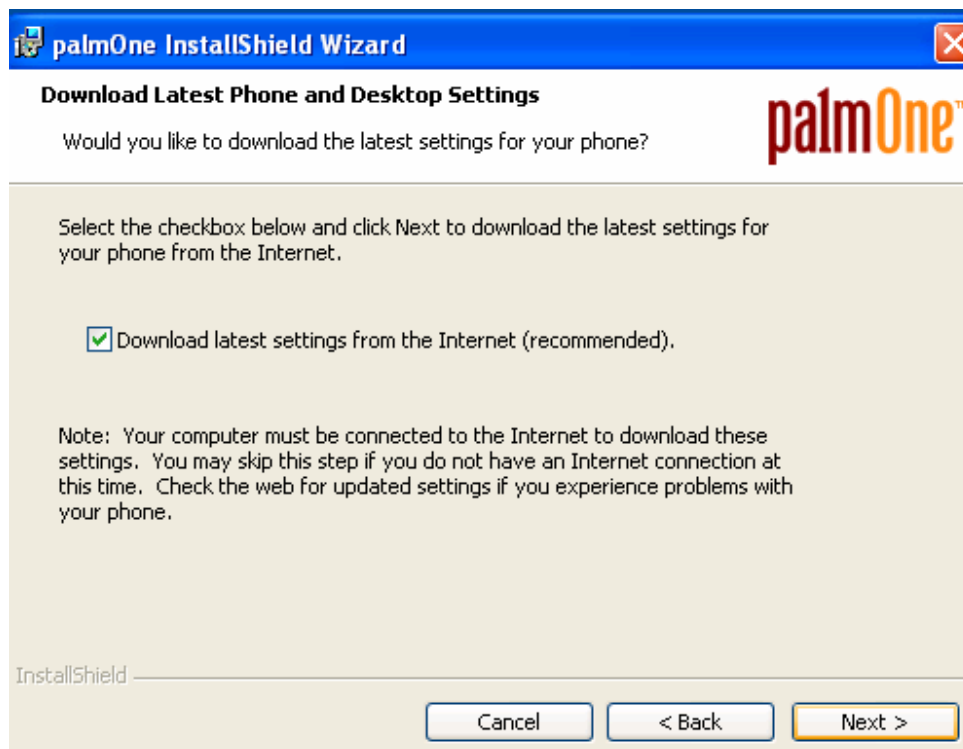
Step 3. Click " Next " to install software from PalmOne on your computer.



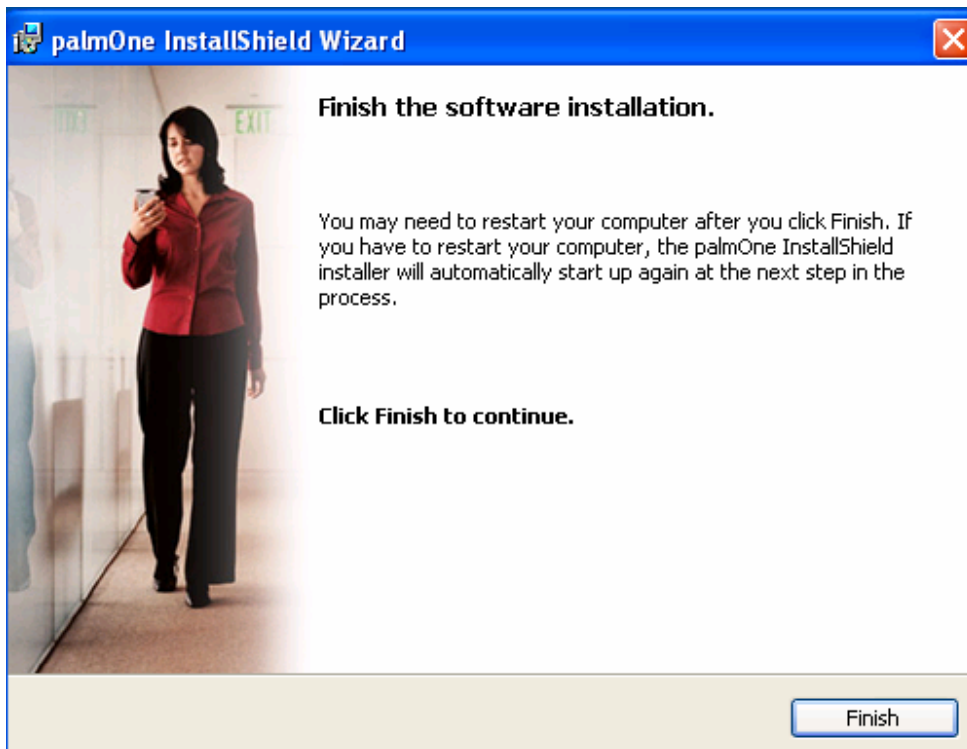
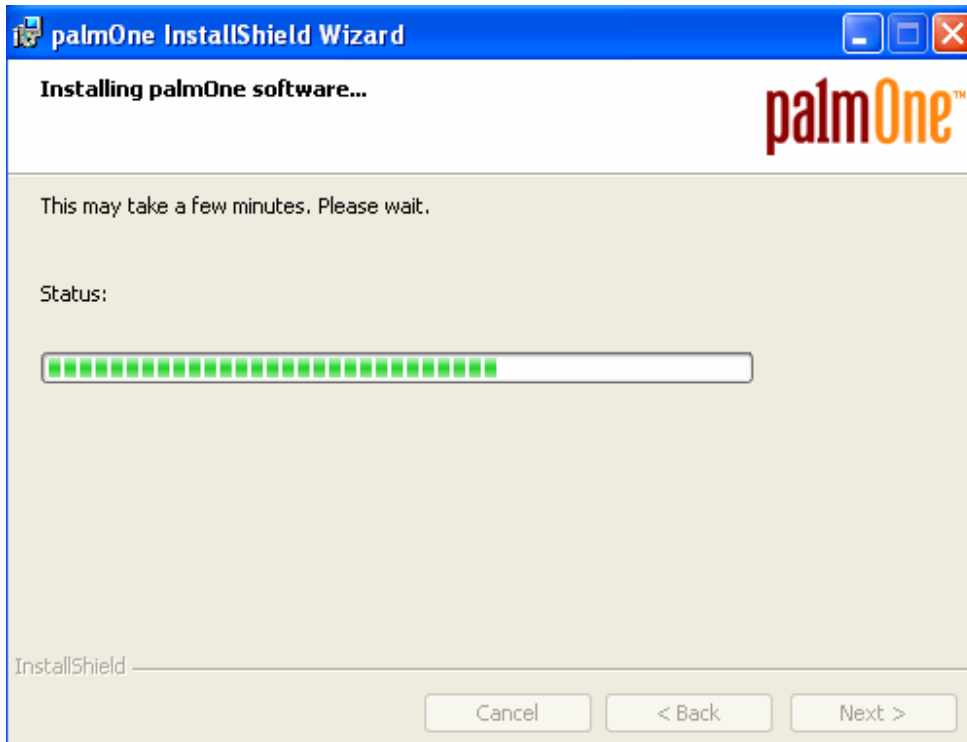
Step 4. Select "I accept these terms " option and click the "Next" to continue.



Step 5. You select the checkbox below and click “Next” to download the latest settings for your phone from the Internet.



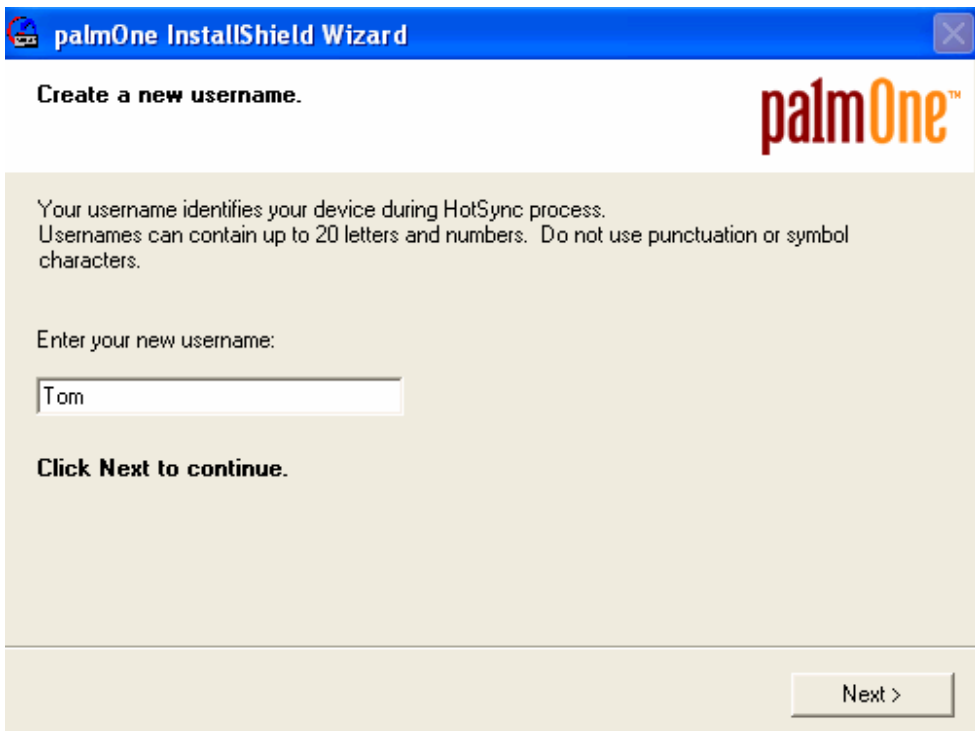
Step 6. Please wait a few minutes until Windows has finished installing the software. then click “Finish” to continue.



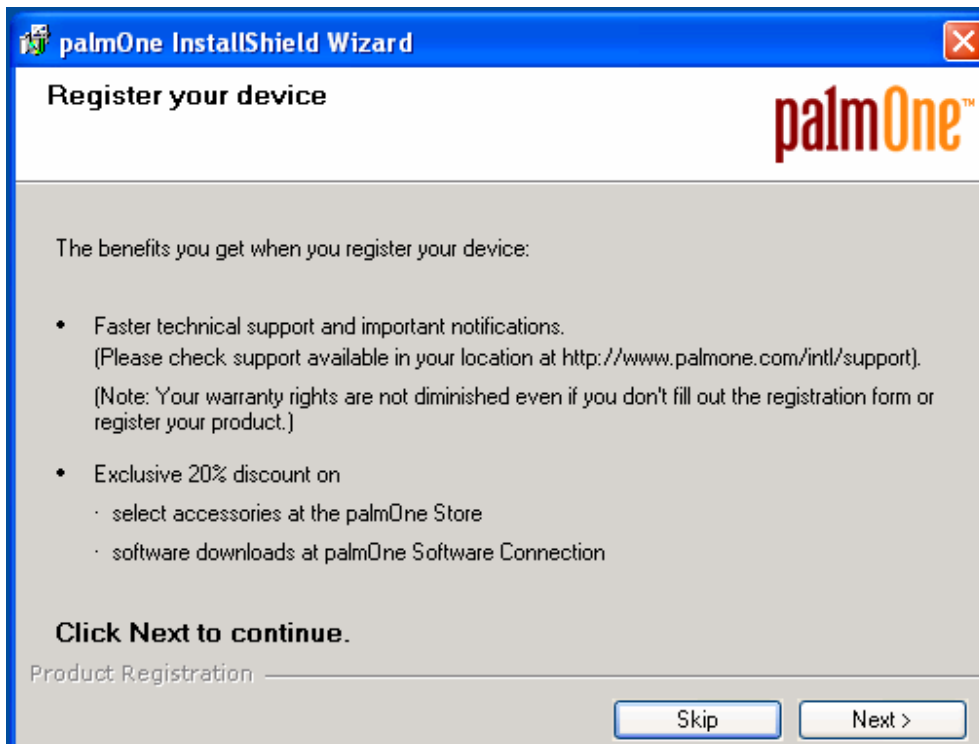
Step 7. Click "Next" to go to step2 to Synchronize your device and computer.



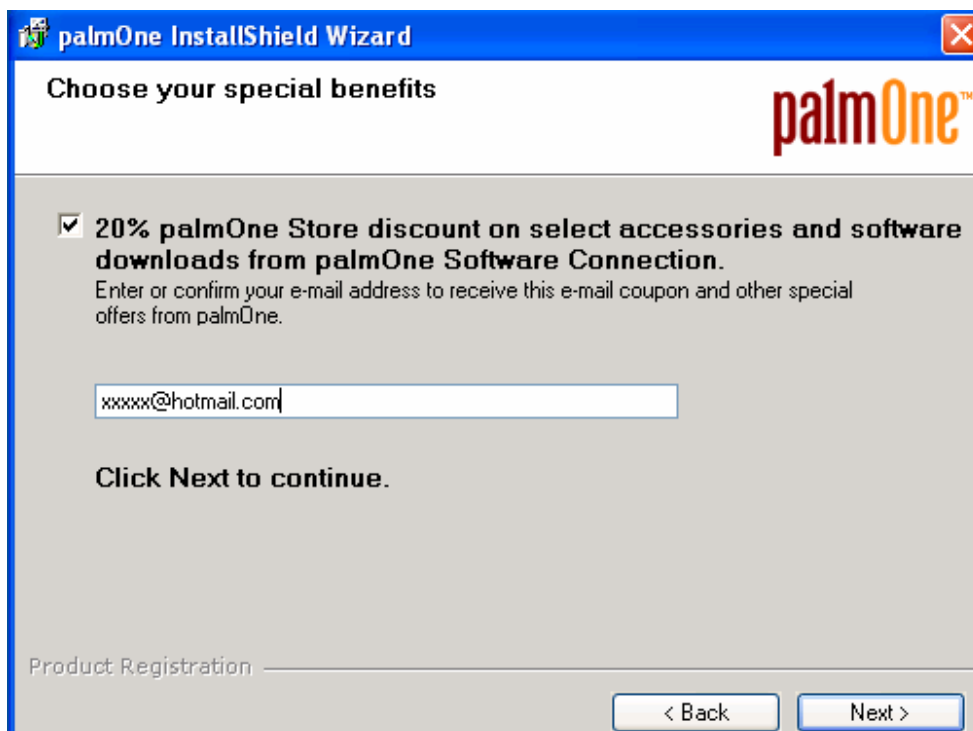
Step8. Enter your new username and click “Next” to continue.



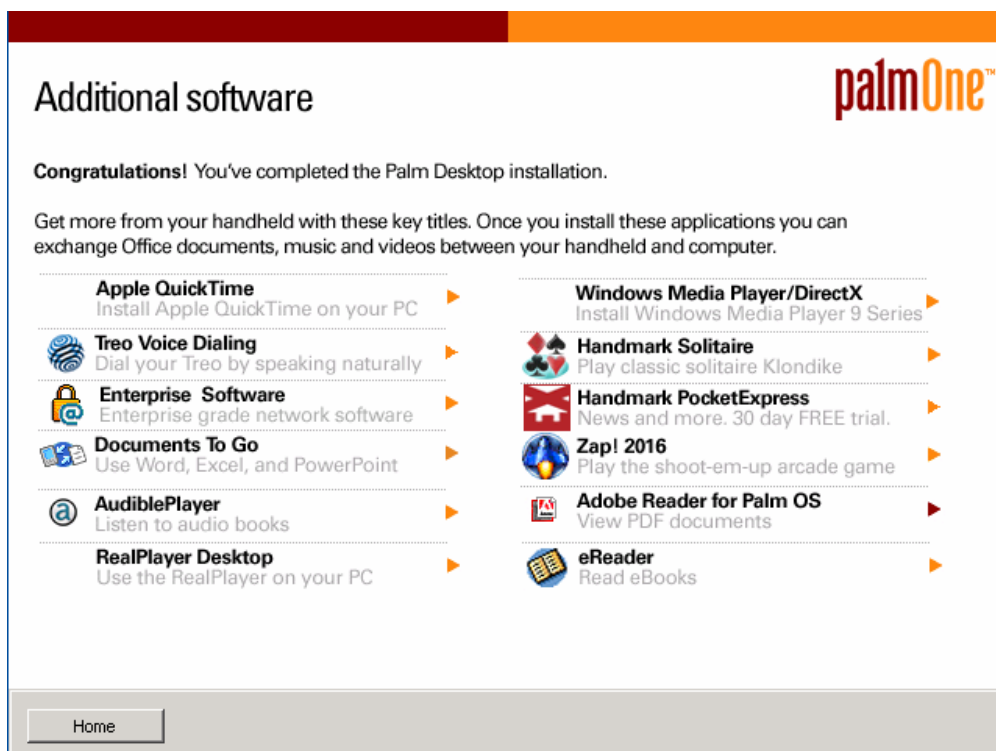
Step9. Please register your device and click “Next” to continue.



Step10. Please enter or confirm your E-mail address to receive your special benefits. and click “Next” to continue.



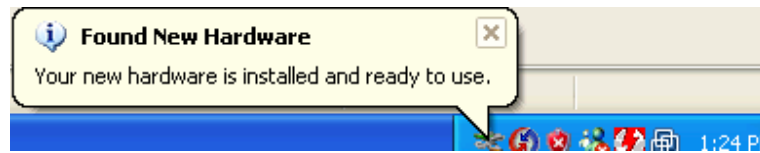
Step11. Click “Next” to go to step4 to install additional software. then you’ve completed the Palm Desktop installation.



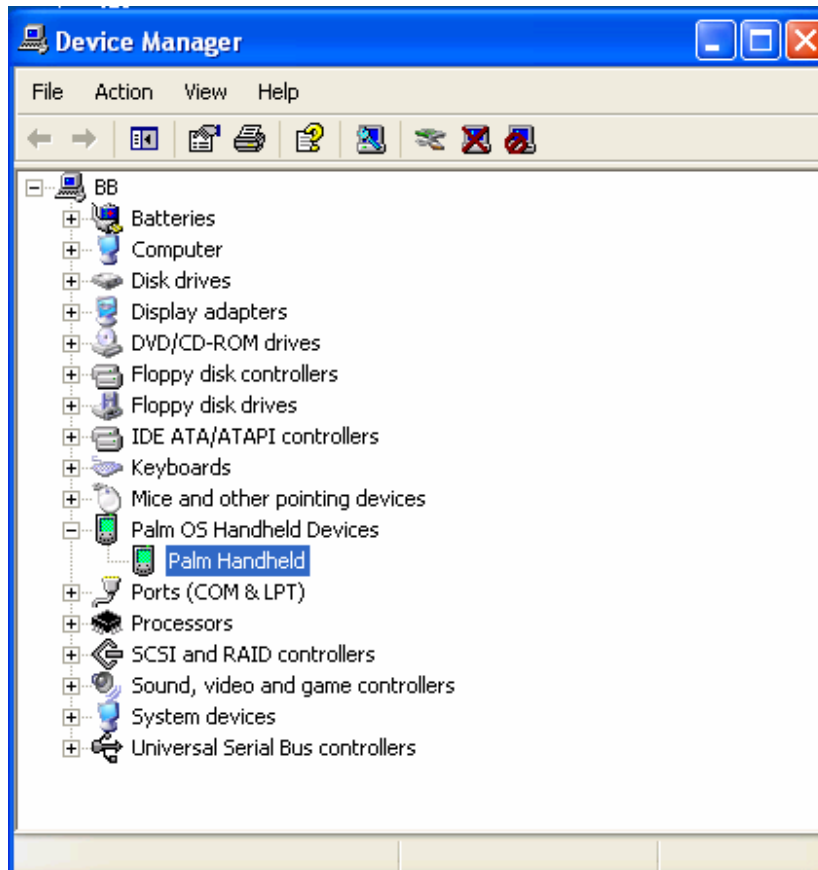
Step12. Windows will display:“Found New Hardware”.



Step13. Please wait until Windows will display: Your new hardware is installed and ready to use.



Step14. Open the system from Control Panel to check the Palm OS Handheld Devices assigned by windows.



Then The USB Data cable is now ready for use.