

# **ACCESSORYGEEKS**

## **Returns Standards**

Conditions for products to be considered as acceptable defect under **AccessoryGeeks'** standard defective returns policy.

# Batteries

## Acceptable



## Not Acceptable



- Does not meet target capacity when tested
- Determined that there is a defect of materials or manufacturing of the product
- Leaking battery

- Meets or exceeds target capacity when tested
- Cracked or missing casing on the battery due to accident, misuse, modification or normal wear and tear
- Swollen battery caused by overcharging

# Handsfree Headsets

**Acceptable**



- Defects in material or manufacturing of the product
- Contains all components

**Not  
Acceptable**



- Cracks or damage cause by accident, misuse, modification or normal wear and tear
- Missing components

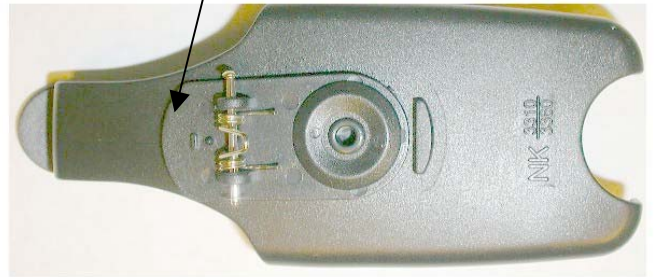
# Holsters

**Acceptable**



**Not Acceptable**

Missing Clip



Broken Clip

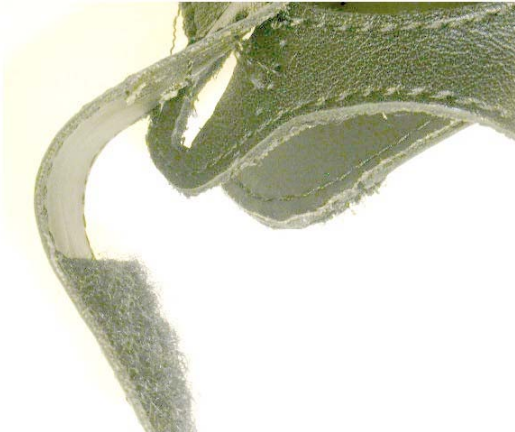


- Defects in material or manufacturing of the product

- Cracks or damage cause by accident, misuse, modification or normal wear and tear

# Leather Cases

## Acceptable



- Defects in the material or manufacturing of the product (e.g. stitching)
- Improper construction
- Discoloration of the leather in a new case

## Not Acceptable



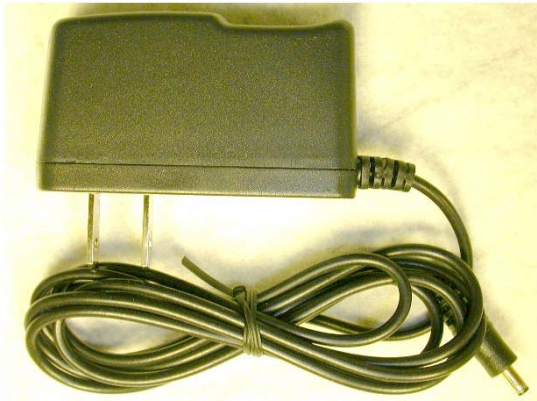
## Normal Wear and Tear



- Worn places on the leather covering the belt clip (normal wear and tear)
- Mold and obvious water damage
- Tears
- Damage caused by apparent accident, misuse, modification or normal wear and tear
- Imperfect fitting (e.g. loose fit, tight fit)
- Damaged "windows"
- Obvious wear and tear caused by normal or heavy use

# Travel Chargers

## Acceptable



- Does not meet targeted charging capability when tested
- Defect in the material or manufacturing of the product

## Not Acceptable



- Meets or exceeds target charging capability when tested
- Cording pulled from base or plug in caused by improper removal from the wall or phone
- Missing component parts
- Cracks or damage cause by accident, misuse, modification or normal wear and tear

# Vehicle Chargers

**Acceptable**



**Not  
Acceptable**



- Does not meet target capacity when tested
- Defect in the material or workmanship of the product

- Meets or exceeds target capacity when tested
- Cording pulled from base of CLA caused by improper removal from the cigarette lighter
- Missing component parts
- Cracks or damage cause by accident, misuse, modification or normal wear and tear
- Damage caused by burning from an external source (usually caused by the cigarette lighter in the automobile cases unacceptable)