

FACEPLATE INSTALLATION FOR SANYO MM-8300

1 You will need a Pry tool, tweezers, and T3 Driver tool.



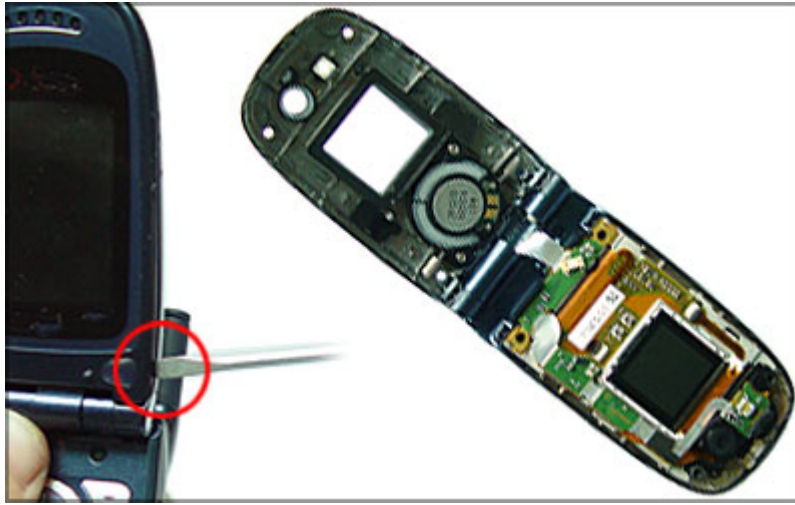
2 First, slide out the side faceplate out.



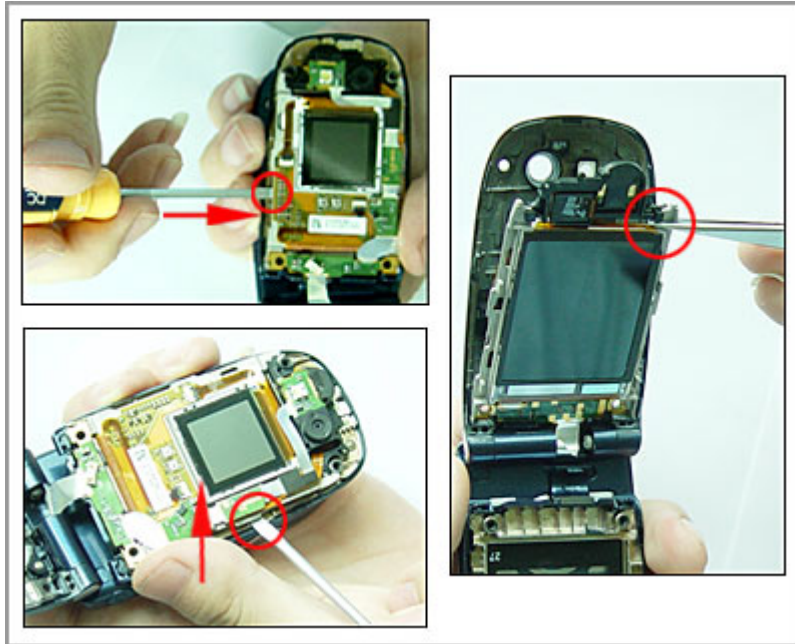
3 After, you'll see four screws, use your T3 driver to remove all four.



4 Remove the top with your Pry tool.



5 Then carefully remove the circuit board.



6 Then release the hinges on the top of the faceplate.



7 Remove the screws of the speaker device away from the front faceplate.



8 By now, you should have 4 small screws and 2 other screws, and the front faceplate removed.



9 Bring your new faceplate in.



10 Screw the speaker device into the new faceplate.



11 Push it done.



12 And Place the hinges back. Then you're done!

