

SEARCH

[Contact](#) [FAQs](#) [Return Policy](#) [Site map](#) [Privacy Policy](#)

 [Cellphone Accessories](#)

 [Cellphone Batteries](#)

 [Clearance Sale Sale!](#)

 [GIFT ITEM!](#)

- [Motorola V220 Accessories](#)
- [Motorola RAZR V3 Accessories](#)
- [Motorola E815 Accessories](#)
- [LG VX-6100 Accessories](#)

Promotion

**FREE
SHIPPING
in the USA**



Cell phone Accessories

- [AUDIOVOX](#)
- [BLACKBERRY](#)
- [HANDSPRING](#)
- [INNOSTREAM](#)
- [KYOCERA](#)
[QUALCOMM](#)
- [LG](#)
- [MOTOROLA](#)
- [NEC](#)
- [NEXTEL](#)
- [NOKIA](#)

[HOME](#) > [FAQ](#) > [FACEPLATE INSTALLATION](#) > [SAMSUNG SGH-D415/SGH410](#)

SAMSUNG SGH-D415/SGH-D410 FULL HOUSING INSTALLATION

1. Samsung SGH-D415 / D410 faceplate installation guide from [Accessorygeeks.com](#)



2. Remove the battery.

- PANASONIC
- SANYO
- SAMSUNG
- SIEMENS
- SHARP
- SONY ERICSSON
- TOSHIBA
- UNIVERSAL
- APPLE IPOD



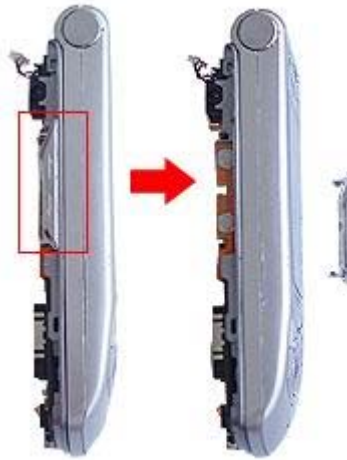
Remove all screws from the back of Samsung SGH-D415 / D410
3



4. Now, Battery housing and mid-back disassembled



5. Remove the metal part from Samsung SGH-D415 / D410



6. Samsung SGH-D415 / D410 faceplate installation guide from Accessorygeeks.com



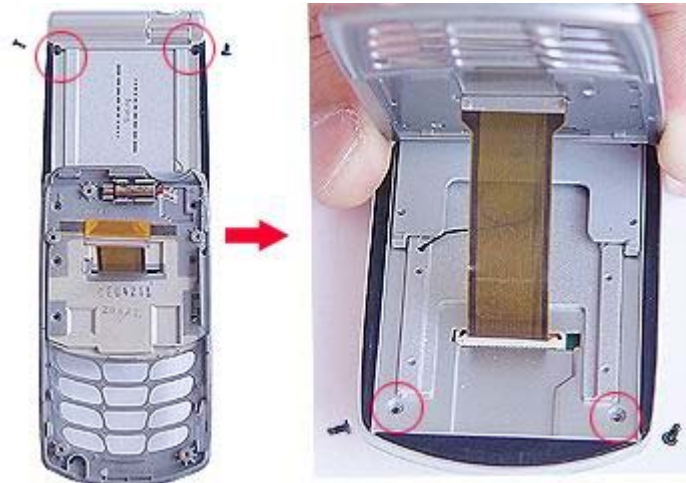
7. Inside view of the face cover



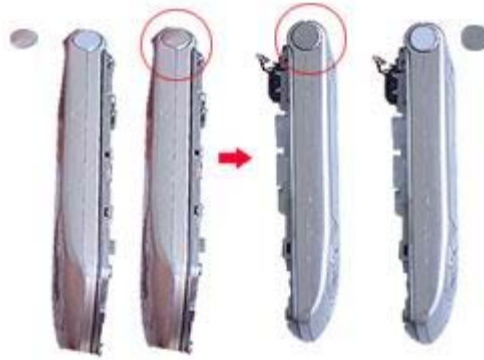
8. Remove all screws and the key pad



9. Remove all screws from Samsung SGH-D415 / D410



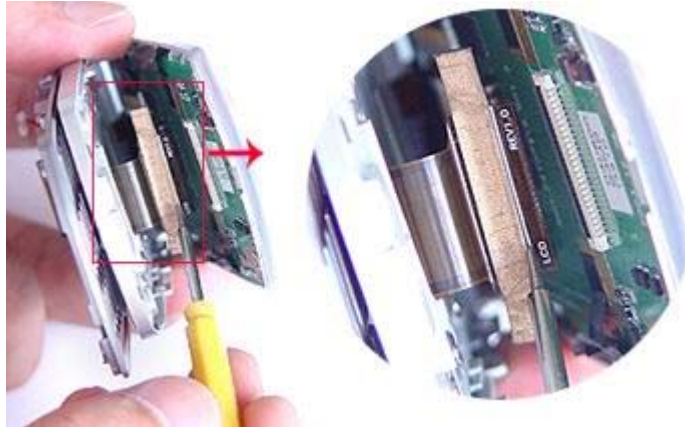
10. Remove a hinge



11. Remove the mid-back cover



12. Samsung SGH-D415 / D410 faceplate installation guide from Accessorygeeks.com



13. Rear view of the battery housing and mid back - Samsung SGH-D415 / D410



14. Remove the face cover - Samsung SGH-D415 / D410



15. Samsung SGH-D415 / D410 faceplate installation guide from Accessorygeeks.com



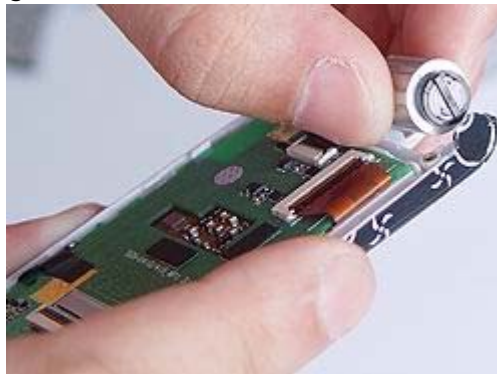
16. New faceplate - Samsung SGH-D415 / D410 faceplate installation guide from Accessorygeeks.com



17. Apply button onto the new faceplate



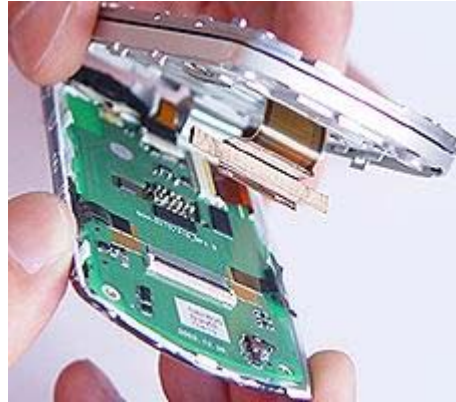
18. Put the hinge back to mid back cover



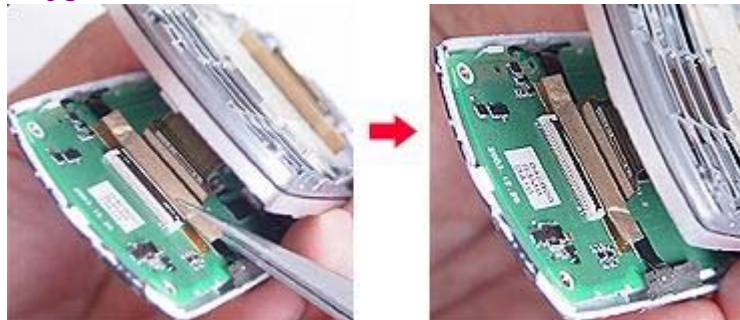
19. Rear view of Samsung SGH-D415 / D410



20. Samsung SGH-D415 / D410 faceplate installation guide from Accessorygeeks.com



21. Samsung SGH-D415 / D410 faceplate installation guide from Accessorygeeks.com



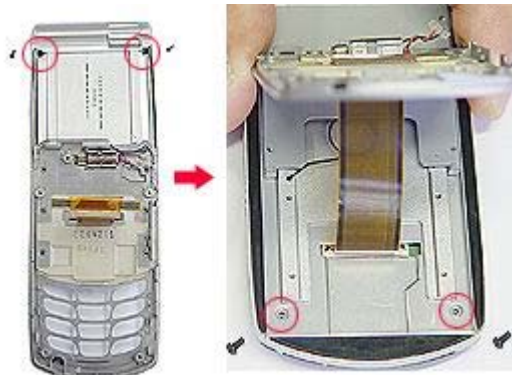
22. Attach the new faceplate



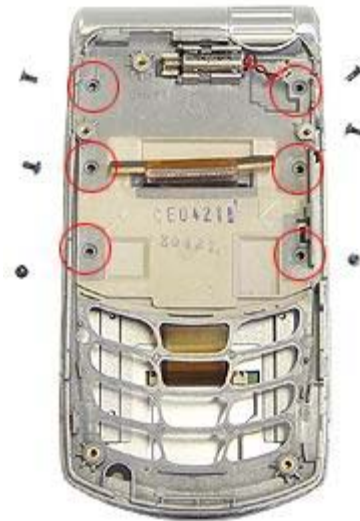
23. New faceplate attached



24. Samsung SGH-D415 / D410 faceplate installation guide from Accessorygeeks.com



25. Apply all the screws



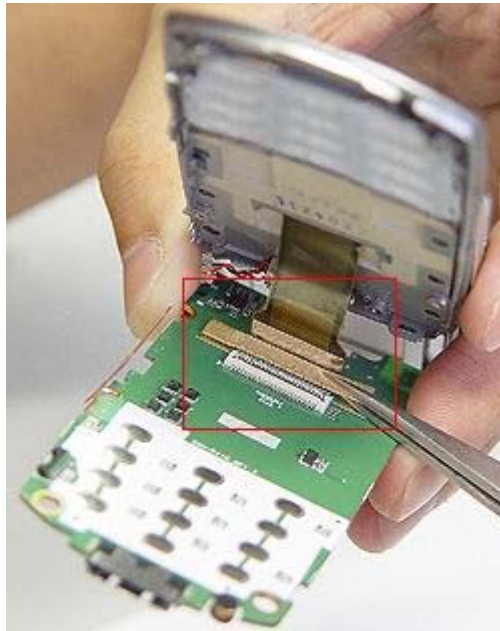
26. Attached the keypad



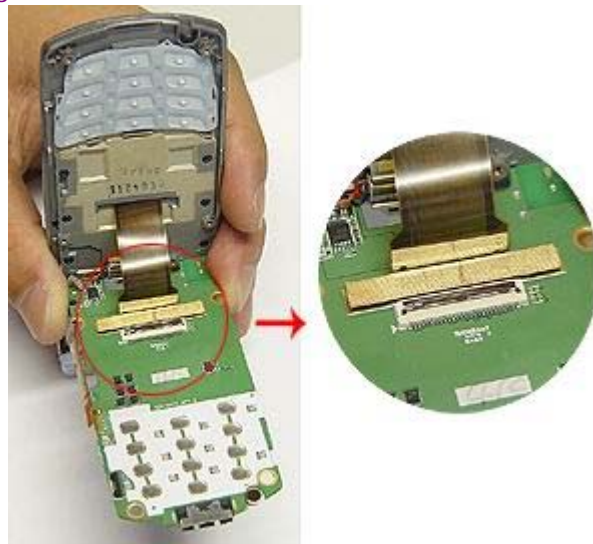
27. Samsung SGH-D415 / D410 faceplate installation guide from Accessorygeeks.com



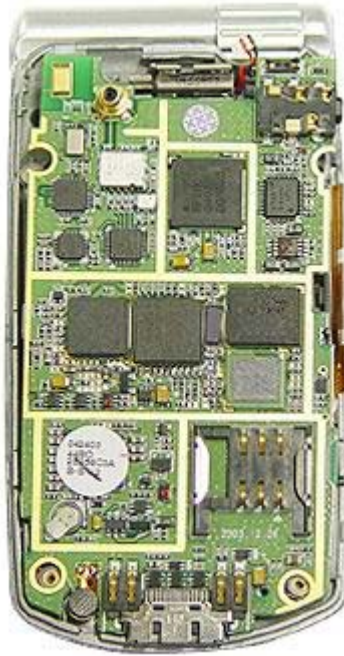
28. Samsung SGH-D415 / D410 faceplate installation guide from Accessorygeeks.com



29. Samsung SGH-D415 / D410 faceplate installation guide from Accessorygeeks.com



30. Inside view of face cover



31. Samsung SGH-D415 / D410



32. Put the metal part (volume control) back to the battery door



33. Samsung SGH-D415 / D410 faceplate installation guide from

Accessorygeeks.com



34. Attach the face cover onto the battery housing



35. Apply all screws



36. Samsung SGH-D415 / D410



37. Rear view of Samsung SGH-D415 / D410



38. Now, Samsung SGH-D415 / D410 new faceplate installation complete

