

SEARCH

[Contact](#) [FAQs](#) [Return Policy](#) [Site map](#) [Privacy Policy](#)

 [Cellphone Accessories](#)

 [Cellphone Batteries](#)

 [Clearance Sale Sale!](#)

 [GIFT ITEM!](#)

- [Motorola V220 Accessories](#)
- [Motorola RAZR V3 Accessories](#)
- [Motorola E815 Accessories](#)
- [LG VX-6100 Accessories](#)

Promotion

**FREE
SHIPPING
in the USA**



Cell phone Accessories

- [AUDIOVOX](#)
- [BLACKBERRY](#)
- [HANDSPRING](#)
- [INNOSTREAM](#)
- [KYOCERA](#)
- [QUALCOMM](#)
- [LG](#)
- [MOTOROLA](#)
- [NEC](#)
- [NEXTEL](#)
- [NOKIA](#)

[HOME](#) > [FAQ](#) > [FACEPLATE INSTALLATION](#) > [SAMSUNG P777](#)

SAMSUNG P777 FULL HOUSING INSTALLATION

1. There are required tools need to change your Samsung P777



2. Remove 5 screws from Samsung P777

- PANASONIC
- SANYO
- SAMSUNG
- SIEMENS
- SHARP
- SONY ERICSSON
- TOSHIBA
- UNIVERSAL
- APPLE IPOD



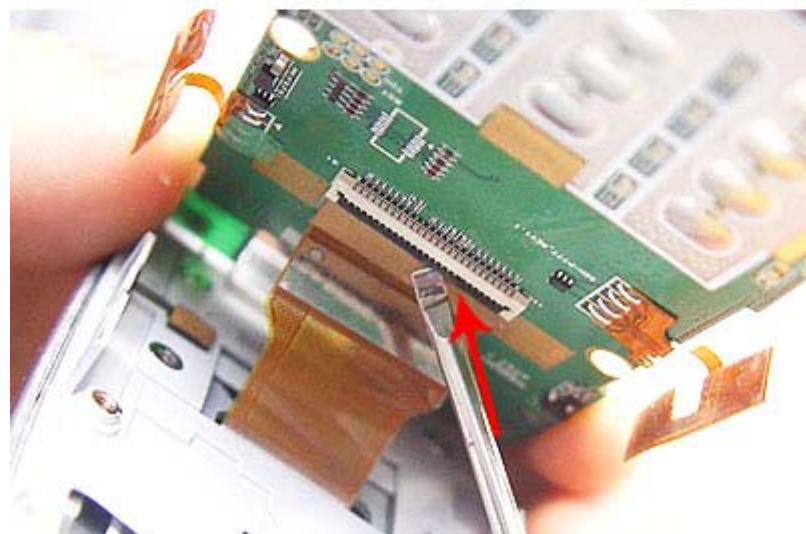
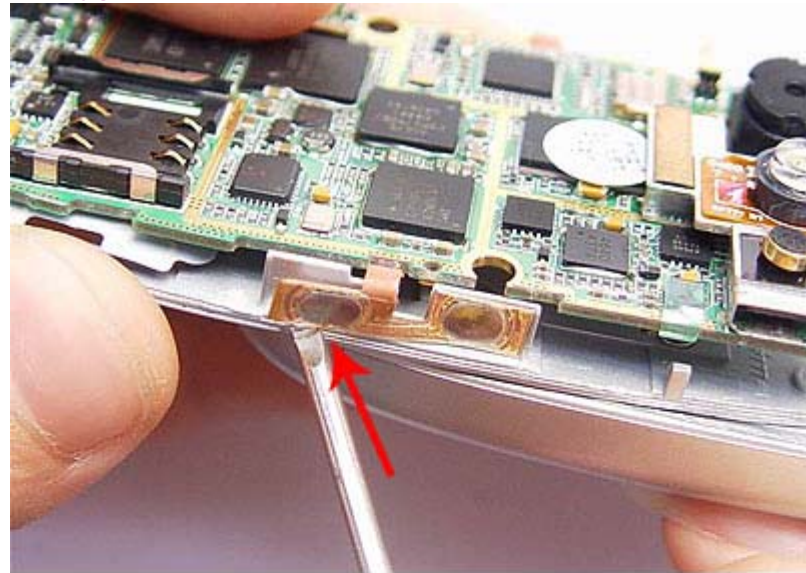
3. Samsung P777 faceplate installation guide from Accessorygeeks.com



4. Inside view of Samsung P777 battery housing



5. Samsung P777 faceplate installation guide from Accessorygeeks.com



6. View of three parts of Samsung P777



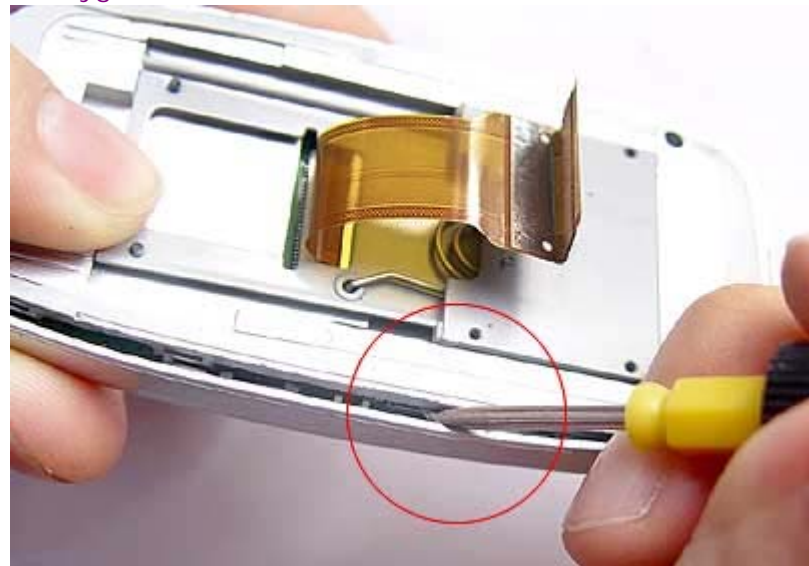
7. Remove battery housing cover - Samsung P777 installation guide from Accessorygeeks.com



8. Remove all screws



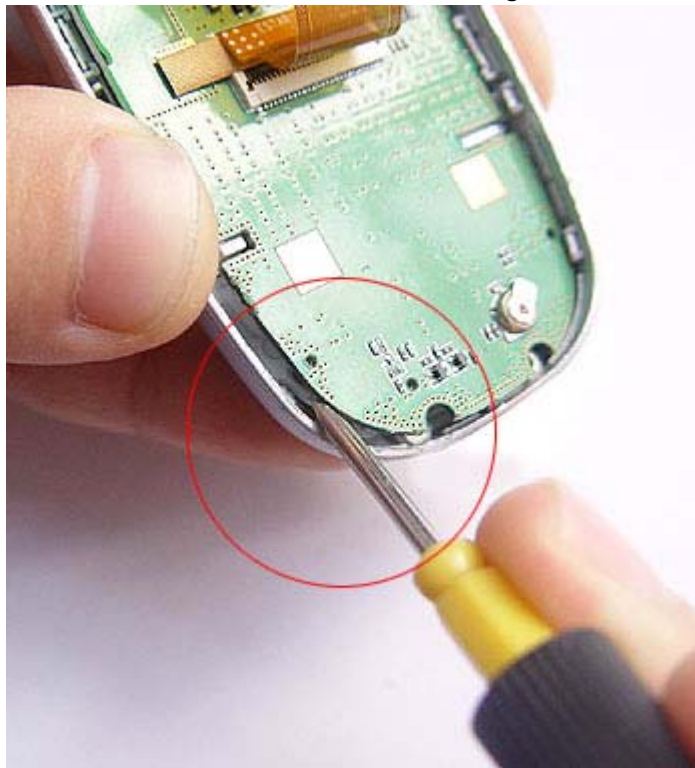
9. Samsung P777 faceplate installation guide from Accessorygeeks.com



10. Samsung P777 faceplate installation guide from Accessorygeeks.com



11. Remove the mother board from Samsung P777



12. Disassemble the face cover



13. Samsung P777 should now be disassembled and removed from each other



14. Now replate your new faceplate covers



15. Replace the LCD cover



16. Samsung P777 faceplate installation guide from Accessorygeeks.com



17. Assemble a new faceplate



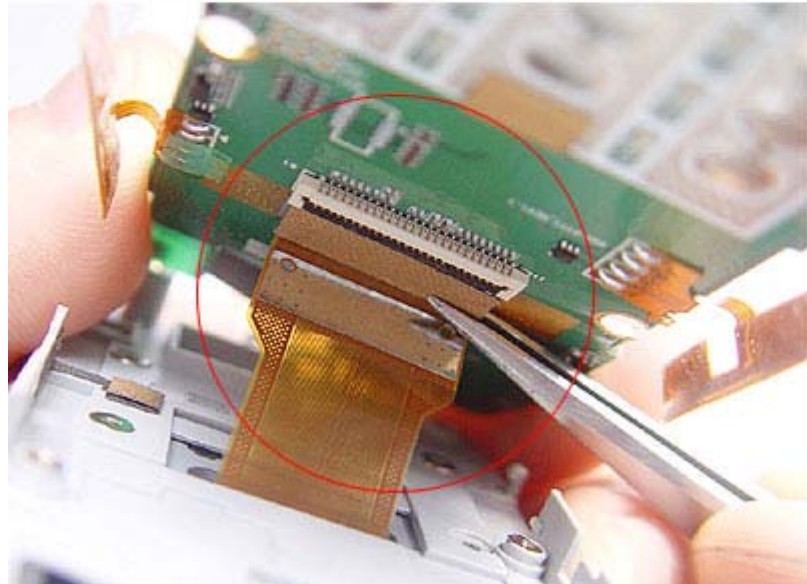
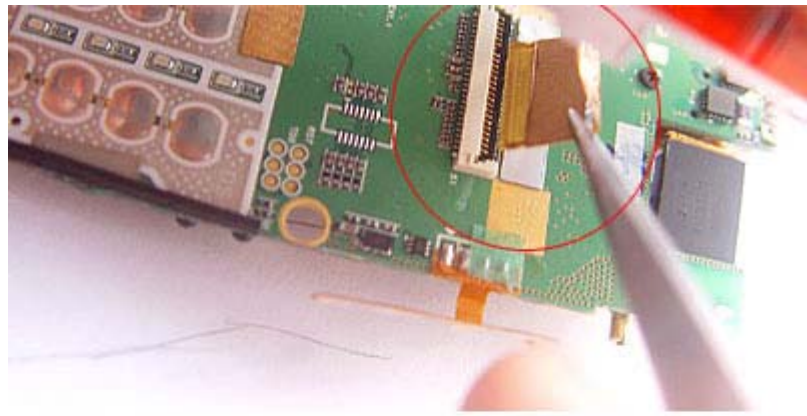
18



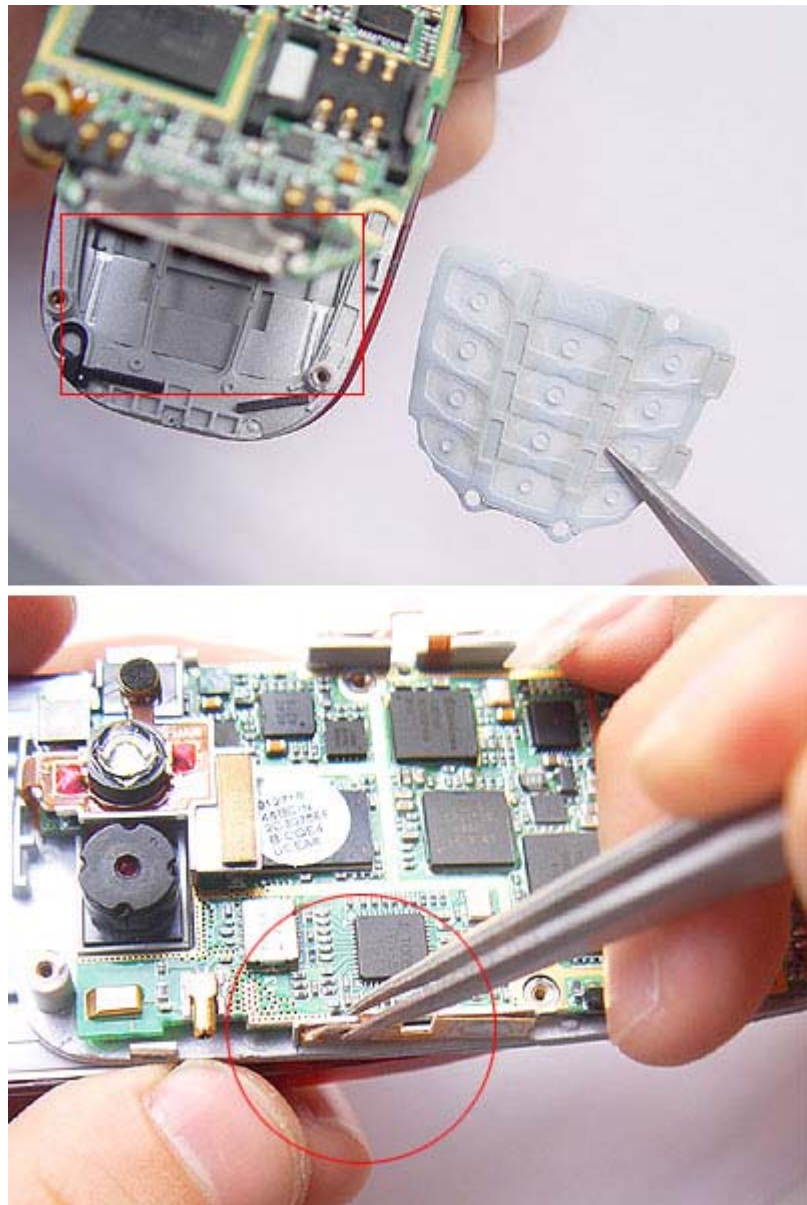
19. Samsung P777 faceplate installation guide from Accessorygeeks.com



20. Detach the yellow connector our of the motherboard



21. Apply the keypad



22. Samsung P777 faceplate installation guide from Accessorygeeks.com



23. Attach the faceplate onto the battery housing



24. Apply all screws - Samsung P777 faceplate installation guide from Accessorygeeks.com



25. Now, Samsung new faceplate installation complete

