

SEARCH

Contact **FAQs** Return Policy Site map Privacy Policy

VIEW CART

 **Cellphone Accessories**

 **Cellphone Batteries**

 **Sale Sale Sale !!!**

 **GIFT ITEMS**

- Sony Ericsson Z520 Accessories
- Motorola RAZR GSM V3 Accessories
- Motorola E815 / E816 Accessories
- LG VX-6100 Accessories

[HOME](#) > [FAQ](#) > [FACE PLATE INSTALLATION](#) > [SAMSUNG MM-A920 / SPH-A920](#)

SAMSUNG MM-A920 / SPH-A920

Promotion



FREE SHIPPING
in the **USA**

1. Remove 2 screws below the inside display with Phillips screwdriver.
AccessoryGeeks.com



Cell phone Accessories

- AUDIOVOX
- BLACKBERRY
- HANDSPRING
- INNOSTREAM
- KYOCERA QUALCOMM
- LG
- MOTOROLA
- NEC
- NEXTEL
- NOKIA
- PANASONIC
- PANTECH
- SANYO

2. Using Pry Tool, separate the faceplate and phone. Disconnect the orange ribbon cable that connects from the phone to the faceplate..

- SAMSUNG
- SIEMENS
- SHARP
- SONY ERICSSON
- TOSHIBA
- UNIVERSAL
- APPLE IPOD



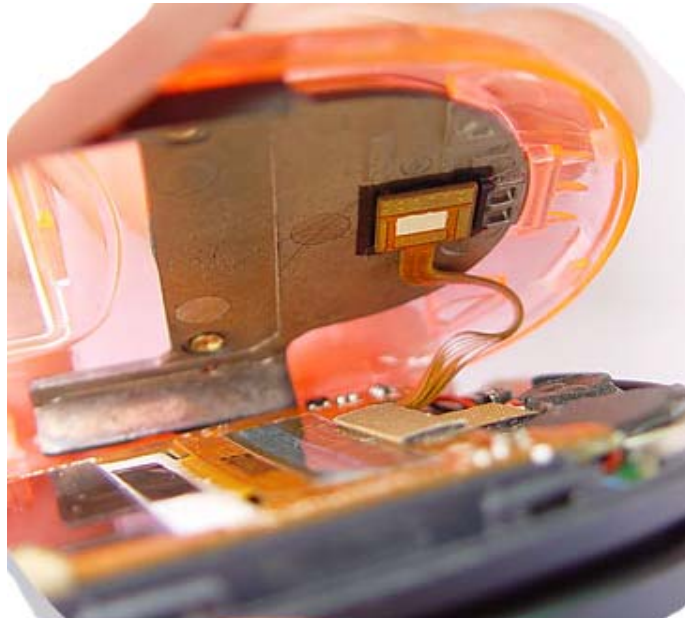
3 .Inside view of Samsung A920 - AccessoryGeeks.com



4. Remove the 2 screws with small phillips screw driver.



5. .Reconnect the ribbon cable and install the new faceplate



Samsung MM- A920 Faceplate Installation Guide From AccessoryGeeks.com