

SEARCH

[Contact](#) [FAQs](#) [Return Policy](#) [Site map](#) [Privacy Policy](#)

 [Cellphone Accessories](#)

 [Cellphone Batteries](#)

 [Clearance Sale Sale!](#)

 [GIFT ITEM!](#)

- [Motorola V220 Accessories](#)
- [Motorola RAZR V3 Accessories](#)
- [Motorola E815 Accessories](#)
- [LG VX-6100 Accessories](#)

*Promotion*

**FREE  
SHIPPING  
in the USA**



*Cell phone Accessories*

- [AUDIOVOX](#)
- [BLACKBERRY](#)
- [HANDSPRING](#)
- [INNOSTREAM](#)
- [KYOCERA](#)
- [QUALCOMM](#)
- [LG](#)
- [MOTOROLA](#)
- [NEC](#)
- [NEXTEL](#)
- [NOKIA](#)

[HOME](#) > [FAQ](#) > [FACEPLATE INSTALLATION](#) > [NEXTEL i830](#)

## NEX i830 FULL HOUSING INSTALLATION

1. Nextel i830 faceplate installation guide from Accessorygeeks.com



2. Remove battery and battery door - Nextel i830

- PANASONIC
- SANYO
- SAMSUNG
- SIEMENS
- SHARP
- SONY ERICSSON
- TOSHIBA
- UNIVERSAL
- APPLE IPOD



3. There are 4 screws on the back of the battery housing - Nextel i830



4. Remove all screws from the battery housing



5. Remove the screw - Nextel i830



6. Remove the antenna



7. Remove the battery housing - Nextel i830



8. Rear view of battery housing and face cover - Nextel i830



9. Nextel i830 faceplate installation guide from Accessorygeeks.com



10. Disassemble the face cover - Nextel i830



11. Stick your pick into the middle cover of Nextel i830 faceplate corner



12. Take the black connector out of the front faceplate



13. View of the faceplate and keypad



14. Nextel i830 faceplate installation guide from Accessorygeeks.com



15. There are two screws on the faceplate



16. Remove all screws from the faceplate - Nextel i830



17. Nextel i830 faceplate installation guide from Accessorygeeks.com



18. Remove a hinge - Nextel i830



19. Remove the face cover - Nextel i830



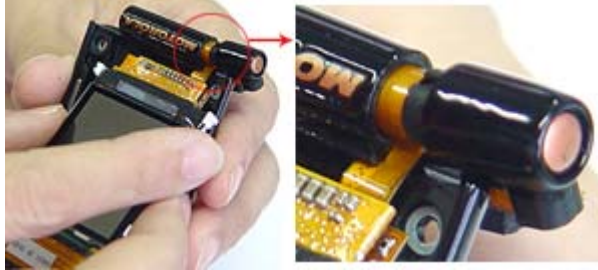
20. View after remove the face cover



21. nextel i830



22. Nextel i830 faceplate installation guide from Accessorygeeks.com



23. Inside view after remove the LCD



24. Nextel i830 faceplate installation guide from Accessorygeeks.com



25. Nextel i830



26. There are 3 screws



27. Complete disassemble



28. Prepare for reinstall with valor full housing.



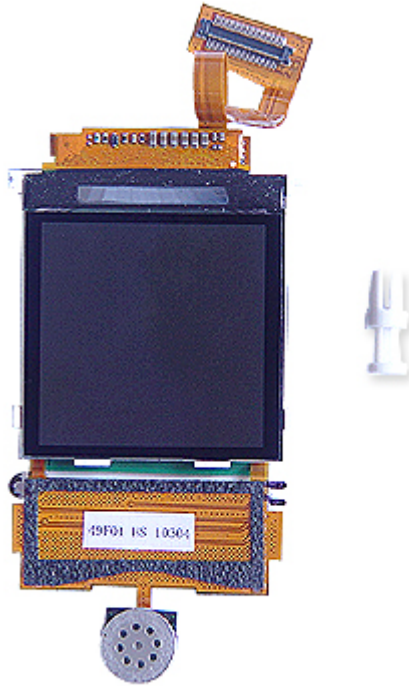
29. Nextel i830



30. Inside view



31. The LCD screen



32. Nextel i830 LCD.



33. Assemble a hinge



34. Assemble a new faceplate.



35. Assemble a new faceplate cover



36. Apply all screws



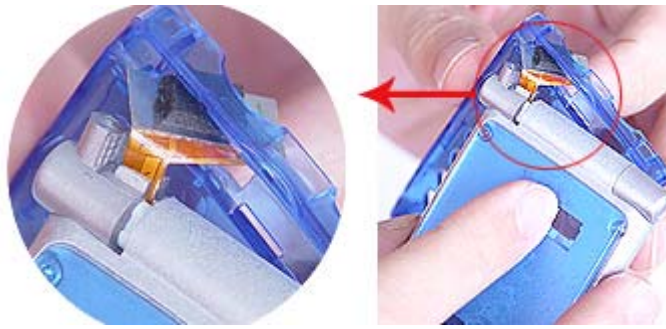
37. Assemble face cover



38. New key pad cover



39. Attach new keypad cover



40. View of the top - Nextel i830



41. New keypad and keypad cover



42. Attacg keypad onto the components



43. Inside view of the faceplate



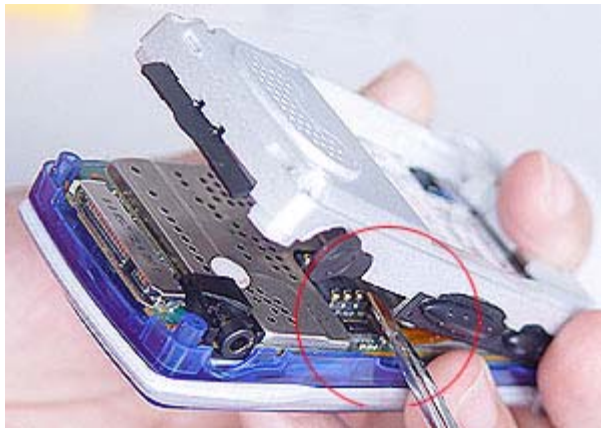
44. Nextel i830



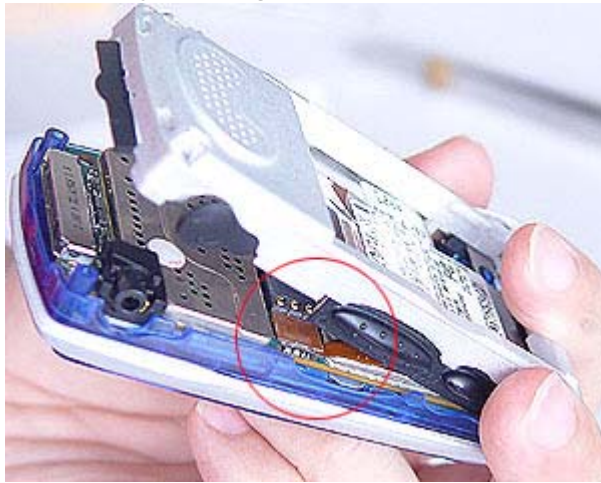
45. Inside view of the battery housing and mid-back



46. Nextel i830



47. Attach the battery housing



48. Apply all screws - Nextel i830



49. Put the antenna back into Nextel i830



50. Apply all the miscellaneous parts



51. Put the battery and battery door back into Nextel i830



52. Rear view of Nextel i830



53. Now, Nextel i830 new faceplate installation complete

