

SEARCH

[Contact](#) [FAQs](#) [Return Policy](#) [Site map](#) [Privacy Policy](#)

 [Cellphone Accessories](#)

 [Cellphone Batteries](#)

 [Clearance Sale Sale!](#)

 [GIFT ITEM!](#)

- [Motorola V220 Accessories](#)
- [Motorola RAZR V3 Accessories](#)
- [Motorola E815 Accessories](#)
- [LG VX-6100 Accessories](#)

[HOME](#) > [FAQ](#) > [FACEPLATE INSTALLATION](#) > [NEXi265](#)

NEX-i265 FULL HOUSING INSTALLATION

1. These are required tools to change your Nextel i265 faceplate.

Promotion

FREE
SHIPPING
in the USA



Cell phone Accessories

- [AUDIOVOX](#)
- [BLACKBERRY](#)
- [HANDSPRING](#)
- [INNOSTREAM](#)
- [KYOCERA](#)
- [QUALCOMM](#)
- [LG](#)
- [MOTOROLA](#)
- [NEC](#)
- [NEXTEL](#)
- [NOKIA](#)

2. Remove the battery and battery door.

- PANASONIC
- SANYO
- SAMSUNG
- SIEMENS
- SHARP
- SONY ERICSSON
- TOSHIBA
- UNIVERSAL
- APPLE IPOD



3. Remove all screws from the back of Nextel i265



4. The rear view of Nextel i265



5. Flip over the key pad - Nextel i265



6. Now disassemble the key pad out of the faceplate - Nextel i265



7. Rear view of the faceplate.



8. Nextel i265 faceplate installation guide from Accessorygeeks.com



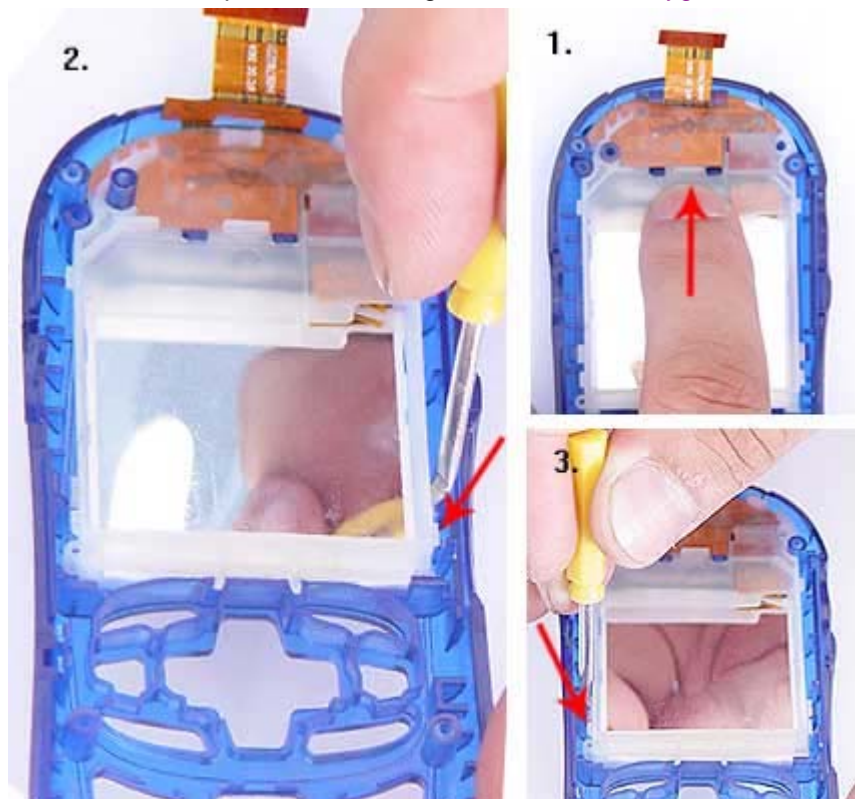
9. Remove the camera out of the faceplate - Nextel i265



10. Place a camera onto the new faceplate - Nextel i265



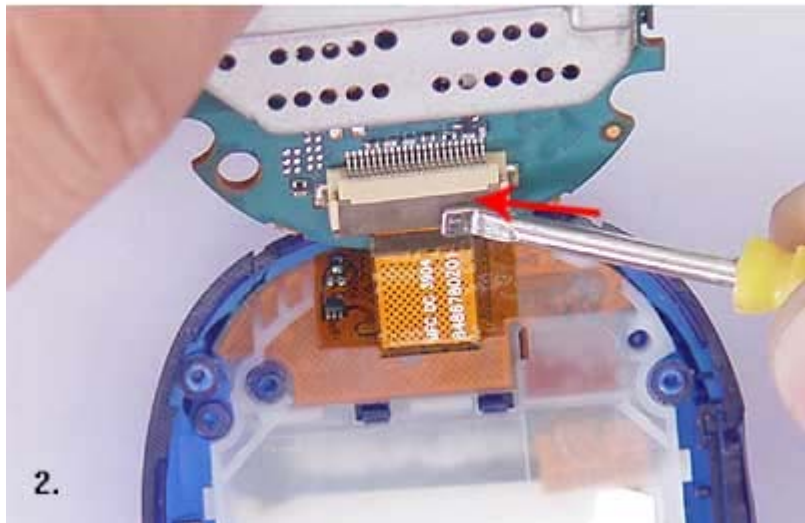
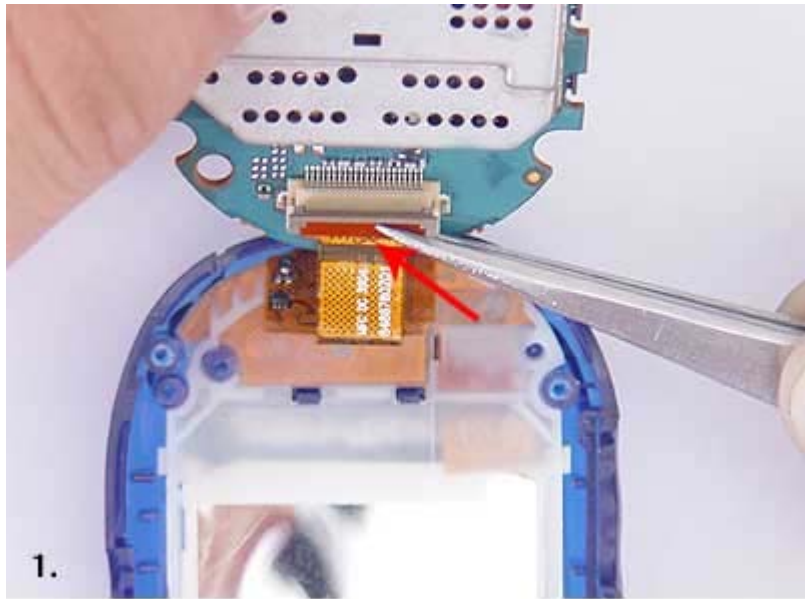
11. Nextel i265 faceplate installation guide from Accessorygeeks.com



12. Nextel i265 faceplate installation guide from Accessorygeeks.com



13. Push the yellow tag from Nextel i265



14. Rear view of the face plate and mid-back cover.



15. Apply all screws and antenna - Nextel i265



16. Put the battery and battery cover back to Nextel i265



17. Now, nextel i265 new faceplate installation complete.

