

SEARCH

Contact FAQs Return Policy Site map Privacy Policy

 **Cellphone Accessories**

 **Cellphone Batteries**

 **Clearance Sale Sale!**

 **GIFT ITEM!**

- Motorola V220 Accessories
- Motorola RAZR V3 Accessories
- Motorola E815 Accessories
- LG VX-6100 Accessories

Promotion

FREE SHIPPING
in the USA



Cell phone Accessories

- AUDIOVOX
- BLACKBERRY
- HANDSPRING
- INNOSTREAM
- KYOCERA
- QUALCOMM
- LG
- MOTOROLA
- NEC
- NEXTEL
- NOKIA

[HOME](#) > [FAQ](#) > [FACEPLATE INSTALLATION](#) > [MOTOROLA V220](#)

MOTOROLA V-220 FULL HOUSING INSTALLATION

1. These are required tools to change your Motorola V-220 faceplate installation guide from Accessorygeeks.com

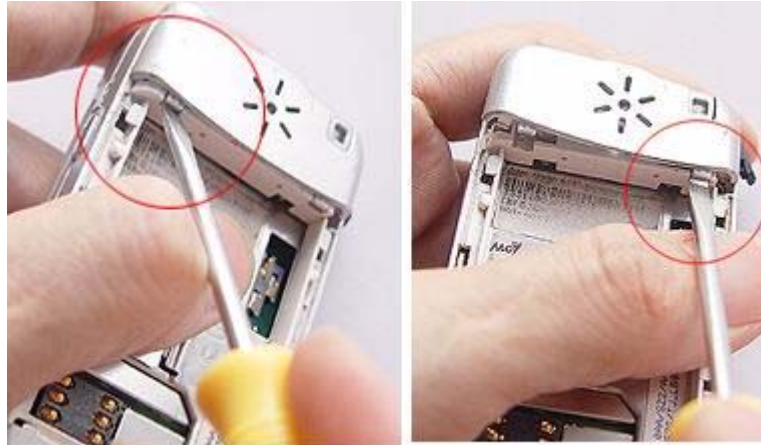


2. Remove battery door, battery and antenna.

- PANASONIC
- SANYO
- SAMSUNG
- SIEMENS
- SHARP
- SONY ERICSSON
- TOSHIBA
- UNIVERSAL
- APPLE IPOD



3. Remove speaker cover - Motorola V-220 from Accessorygeeks.com



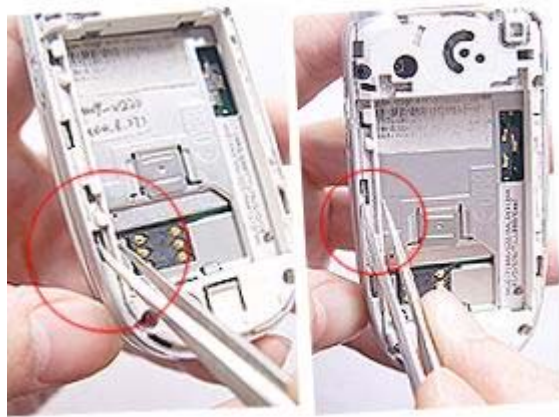
4. Motorola V-220 faceplate installation from Accessroygeeks.com



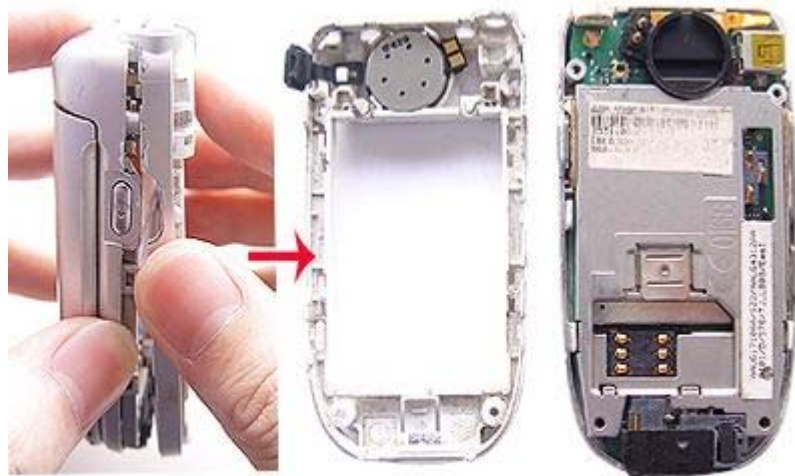
5. Remove all screws from back of Motorola V-220 battery housing.



6. Motorola V-220 faceplate installation guide from Accessorygeeks.com



7. Remove mid-back cover from the battery housing of Motorola V-220.



8. Remove speaker from mid-back cover.



9. Motorola V-220



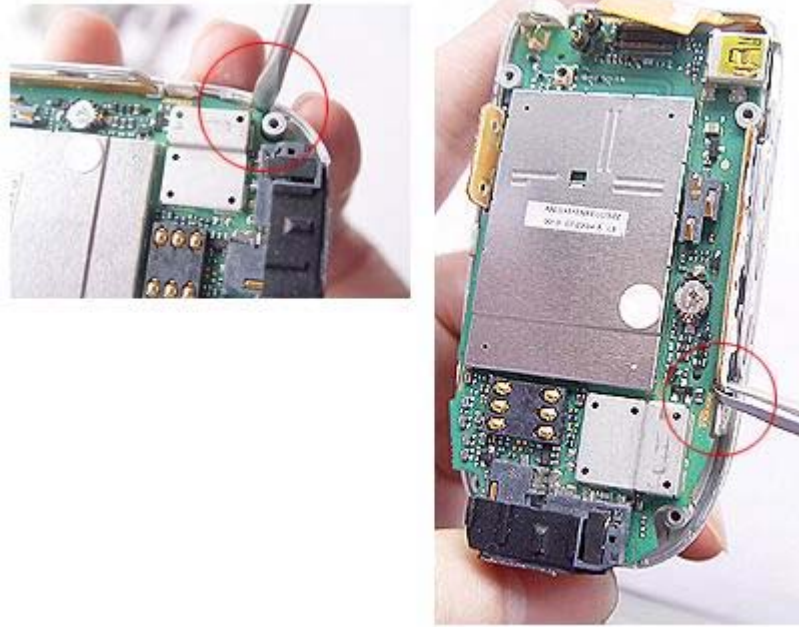
10. Push the yellow tag up from Motorola V-220 faceplate component.



11. Remove metal housing.



12. Motorola V-220 faceplate installation guide from Accessorygeeks.com



13. View of three parts of Motorola V-220.



14. Motorola V-220 faceplate installatino guide from Accessorygeeks.com



15. Motorola V-220 faceplate installatino guide from Accessorygeeks.com



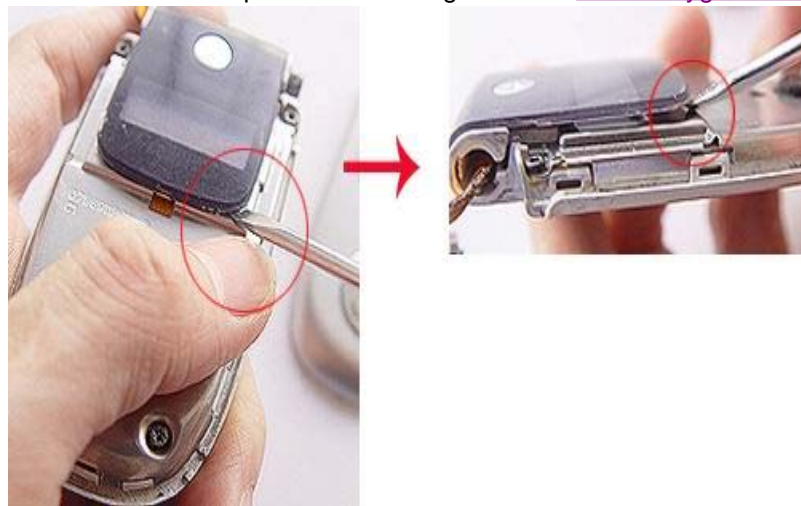
16. Motorola V-220 faceplate installation guide from Accessorygeeks.com



17. Remove LCD cover from faceplate.



18. Motorola V-220 faceplate installation guide from Accessorygeeks.com



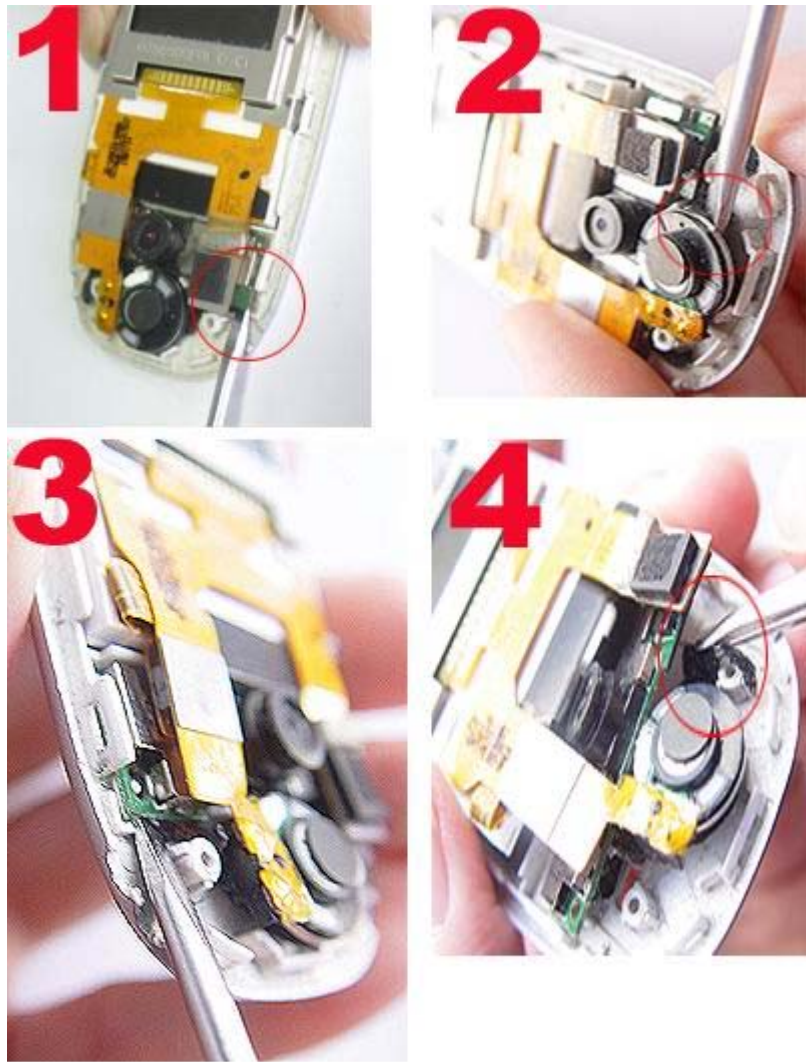
19. Motorola V-220 faceplate installation guide from Accessorygeeks.com



20. Remove all screws.



21. Motorola V-220 faceplate installation guide from Accessorygeeks.com



22. Motorola V-220 faceplate installation guide from Accessorygeeks.com



23. Motorola V-220 should now be disassembled and removed from each other.



24. New faceplate - Motorola V-220 faceplate installation guide from Accessorygeeks.com



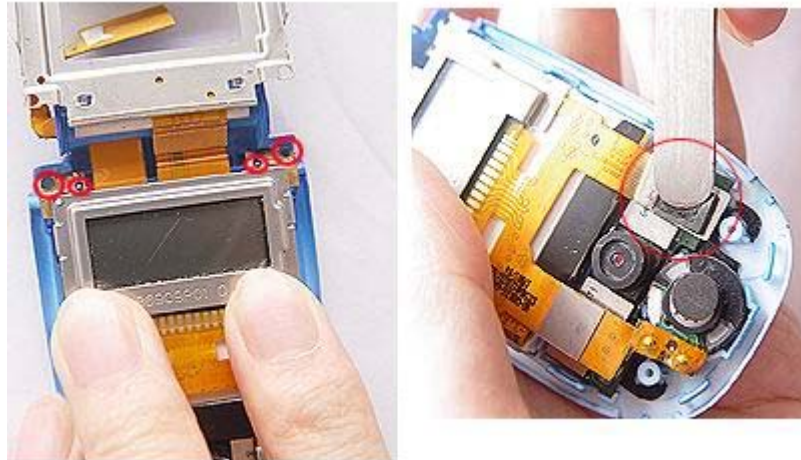
25. Replace LCD cover.



26. Apply LCD parts to the faceplate.



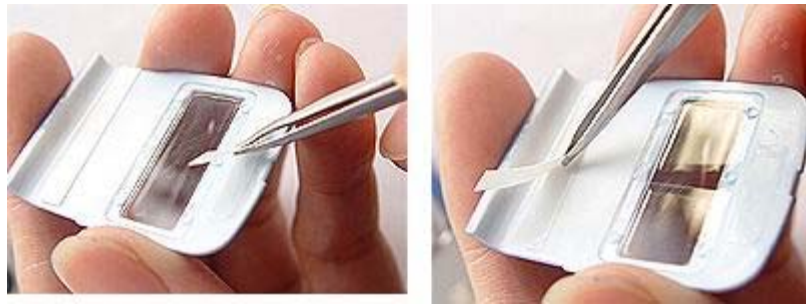
27. Put LCD panel back to the faceplate - Motorola V-220.



28. Apply all screws.



29. Motorola V-220 faceplate installation guide from Accessorygeeks.com



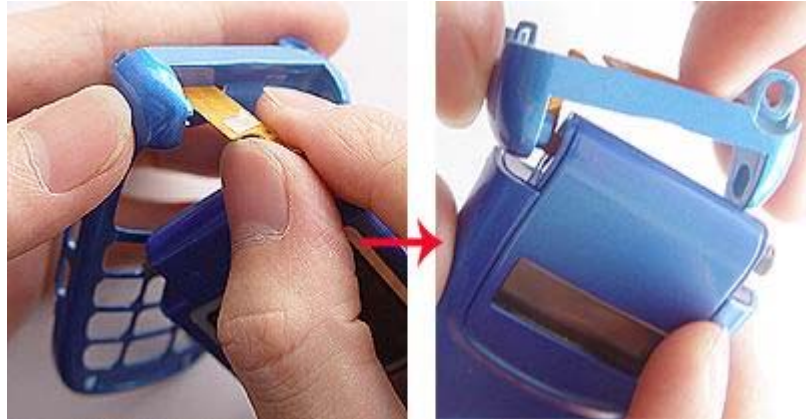
30. Motorola V-220 faceplate installation guide from Accessorygeeks.com



31. New faceplate assembled.



32. Motorola V-220 faceplate installation guide from Accessorygeeks.com



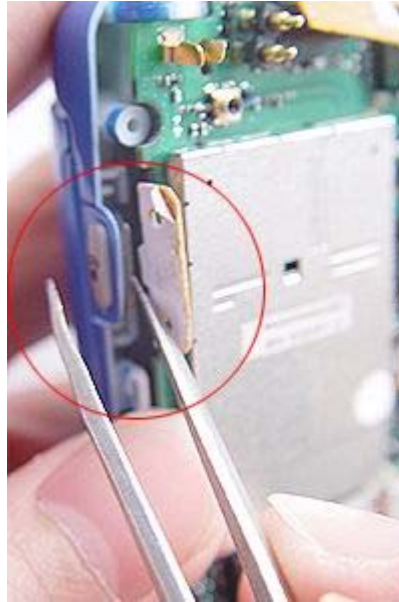
33. Put the hinge back to Motorola V-220



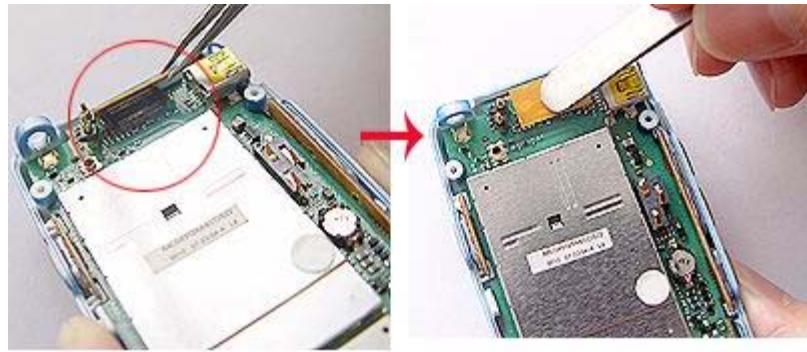
34. Motorola V-220



35. Put yellow connector to the battery housing.



36. Motorola V-220.



37. Put the metal housing back to mid-cover.



38. Reassemble the speaker



39. Apply all screws



40. Motorola V-220 faceplate installation guide from Accessorygeeks.com



41. Pupt battery, antenna, battery door, and speaker cover into the battery housing.



42. A new Motorola V-220 faceplate installation complete.

