



- Sony Ericsson Z520 Accessories
- Motorola RAZR GSM V3 Accessories
- Motorola E815 Accessories
- LG VX-6100 Accessories

[HOME](#) > [FAQ](#) > [FACE PLATE INSTALLATION](#) > [LG VX-8100](#)

LG VX-8100 FACEPLATE INSTALLATION

1. LG VX-8100 Faceplates Installation Suggested Tools,
Accessorygeeks.com

Promotion



FREE
SHIPPING
in the USA

Cell phone Accessories

- AUDIOVOX
- BLACKBERRY
- HANDSPRING
- INNOSTREAM
- KYOCERA QUALCOMM
- LG
- MOTOROLA
- NEC
- NEXTEL
- NOKIA
- PANASONIC
- PANTECH
- SANYO



2. Remove 4 screws around the LCD Screen

- SAMSUNG
- SIEMENS
- SHARP
- SONY ERICSSON
- TOSHIBA
- UNIVERSAL
- APPLE IPOD



3. Remove the original faceplate with Pry Tool. Gently separate the faceplate
- LG VX8100 Faceplate installation



4. Unplug the cable connector. - LG VX8100 Faceplate Installation Guide -
AccessoryGeeks.com



5. Gently pry off the metal plate inside of the faceplate - LG VX8100 Faceplate Installation Guide - AccessoryGeeks.com



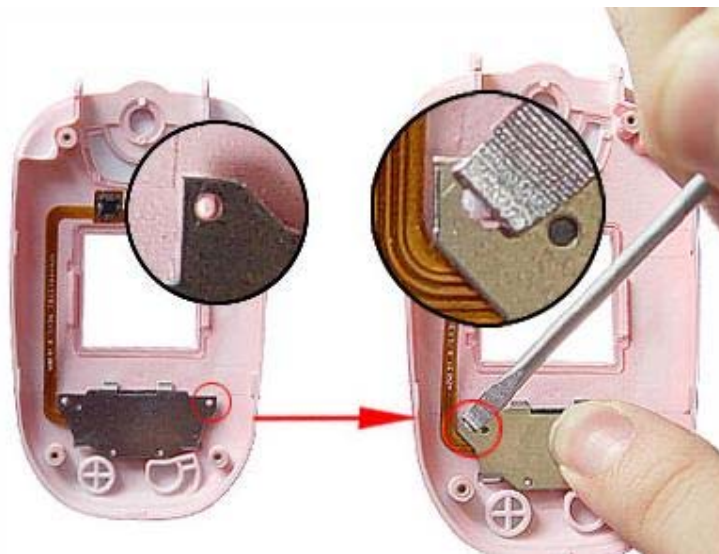
6. LG VX8100 disassembled now - Accessorygeeks.com



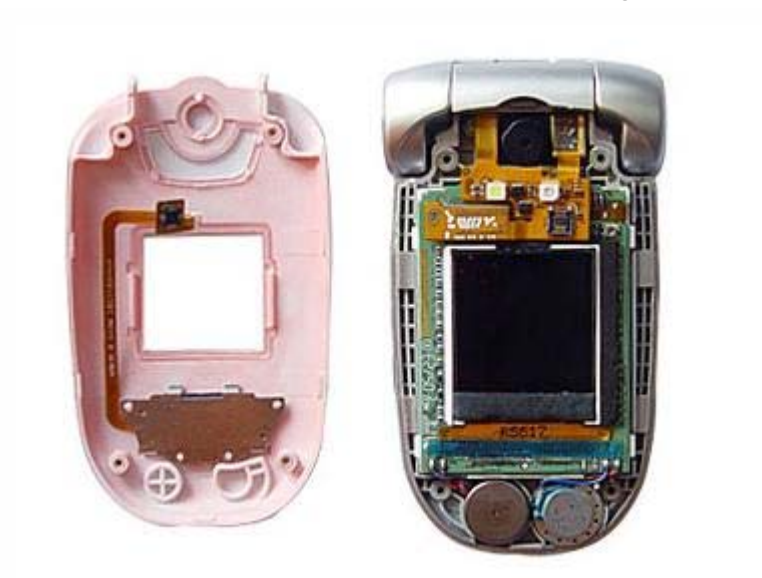
7. Replace a new faceplate onto LG VX8100 housing.



8. Reattach the metal plate to the new faceplate (Gently met the pegs with a HOT screwdriver so they can hold the metal plate)



9. Ready to put the new faceplate back onto the housing



10. Plug the cable connector first and span the faceplate onto the housing

Careful!



11. Reattach the 4 screws.

