

Sony Ericsson Z520 Faceplate Installation Guide From AccessoryGeeks.com

SONY ERICSSON Z520 FACEPLATE INSTALLATION GUIDE

Any information shown here belongs to AccessoryGeeks.com. Individuals who use this information in any sort of illegal way will be tracked down and prosecuted.



Step 1: Remove the front faceplate that is attached to your Sony Ericsson Z520 then

Sony Ericsson Z520 Faceplate Installation Guide From AccessoryGeeks.com

remove 2 screws that are in the front of your phone and 2 screws inside of the phone.



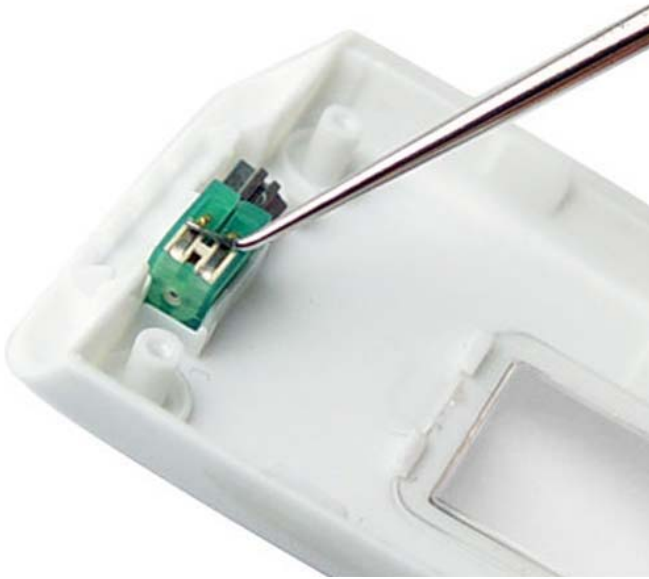
Step 2: Slowly remove the 2nd faceplate away from the circuit board.



Step 3: After the both faceplates are removed, next remove the little component and camera shield away from your old faceplate.



IMAGE OF WHEN EVERYTHING IS LAID OUT AND REMOVED FROM THE PHONE



Step 4: Place the component into the new faceplate along with the camera shield.



Step 5: Place the new faceplate on your phone (on top of the circuit board) and place the screws back into the phone.



Step 6: Simply remove your battery door and replace it with the new Battery door



Here is the finished Look!

Thank you for shopping at AccessoryGeeks.com, we are always out to look for more ways to fulfill your customer's needs. If you have any more questions or concerns, please contact us at 866-433-5793.